

## Overview

Samples is a laboratory sample management tool designed to keep your sample storage inventory organised. Samples software includes a host of features that make storing and searching sample information swift, simple and secure.

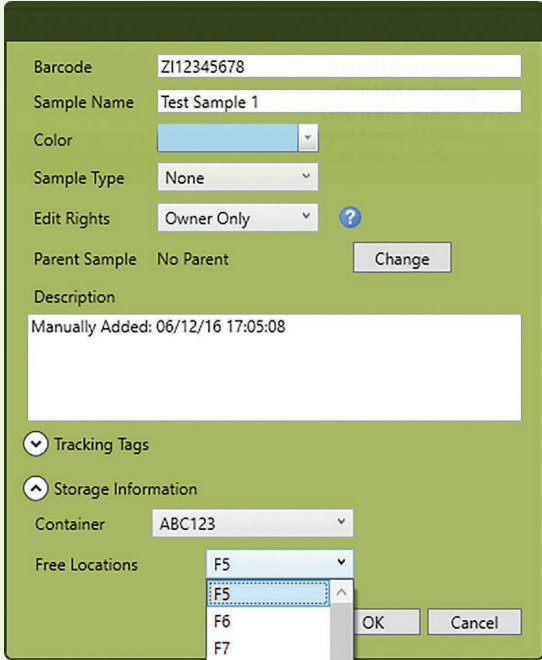
- Its intuitive import tools mean existing sample inventories can be combined with new data, allowing Samples to seamlessly integrate both existing and new samples into the same database.
- Samples' fully editable set-up parameters mean the software can be configured to the individual needs of all laboratories and storage facilities.
- The ability to add custom features, added by our programmers to your specifications, allow us to tailor the software to your exact requirements.

# KEY FEATURES

## Input Data Easily

Samples gives you three options for data entry that depend on user preference and laboratory set-up.

- You may wish to enter sample data manually. Samples' intuitive user interface allows the addition of individual samples to the database.
- Samples software also lets you easily import sample data from existing records in either Excel spreadsheet or text file format. Our Import Wizard ensures your imported data is compatible, making adding legacy data simple and convenient.
- You can also quickly scan in samples and containers using Ziath's DataPaq barcode readers. Samples software can be used to control these instruments, allowing data to be directly imported upon scanning.




*Add new sample screen*

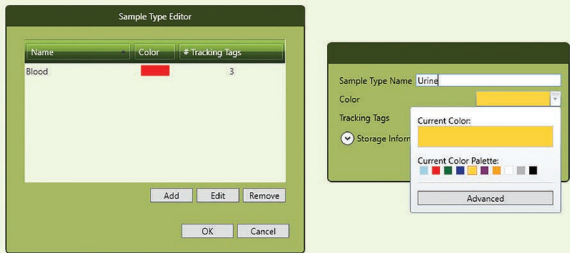
## Create Custom Tracking Tags and Sample Types

Tracking Tags allow you to associate fully-searchable data with your samples. Samples software gives you the freedom to add an unlimited number of tags to describe your samples using a range of descriptors, including free text, quantities, dates and multiple choice formats. Tracking Tags can be made mandatory, ensuring users always supply the necessary data when logging in samples. They can even link to other documents, facilitating easy access to safety or regulatory datasheets.

Our Sample Types labelling feature provides another way to assign searchable information to samples. Sample Types can be used for a number of different applications, an example is to allow differentiation between samples that are used in Laboratory A or those by Laboratory B. Each Sample Type can be assigned its own Tracking Tags, and colour labels can be applied to facilitate rapid sample identification.



*Define unlimited Tracking Tags to describe sample contents*



*Define Sample Types to allow easy recognition of specific samples*

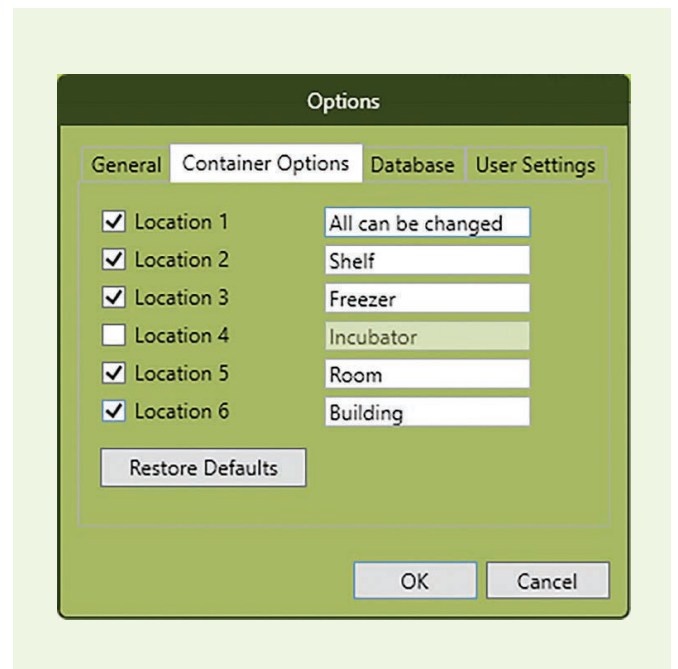


## Customise Your Containers

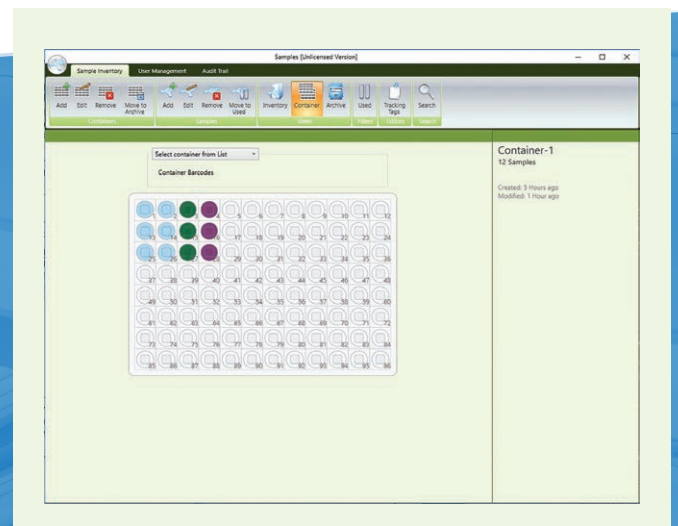
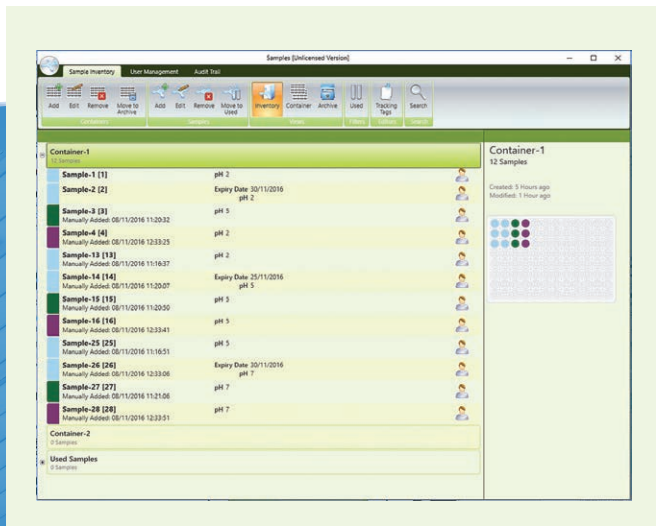
Samples allows you to manually define the size and shape of your sample containers. Even dimensionless containers can be used. Six fully editable levels of container storage location allow you to tailor your database to your laboratory's unique set-up.

## Easily Search Your Samples

Samples allows you to easily switch between viewing individual container layouts in Container View, or as a list of containers and samples in Inventory View, making it easy to manually view sample and container information.

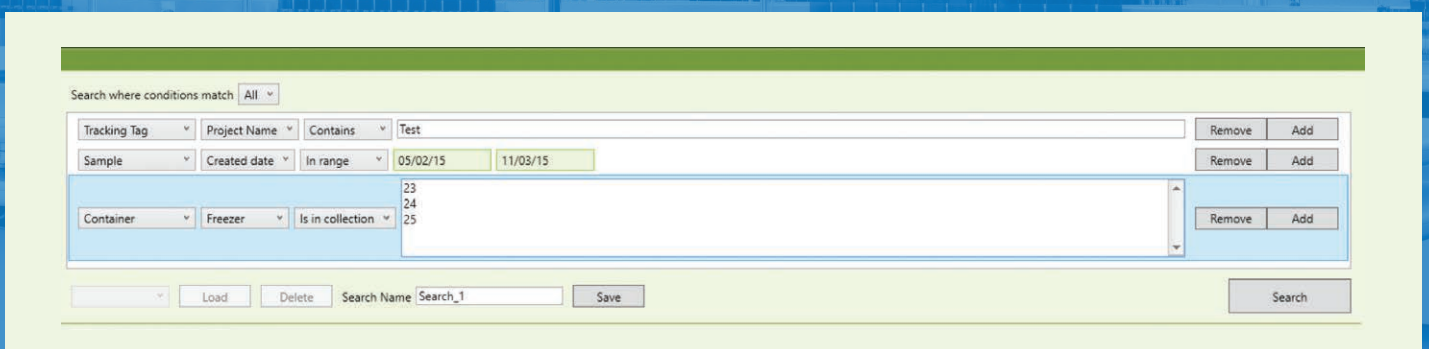


*Completely customise the location information for your containers and samples*

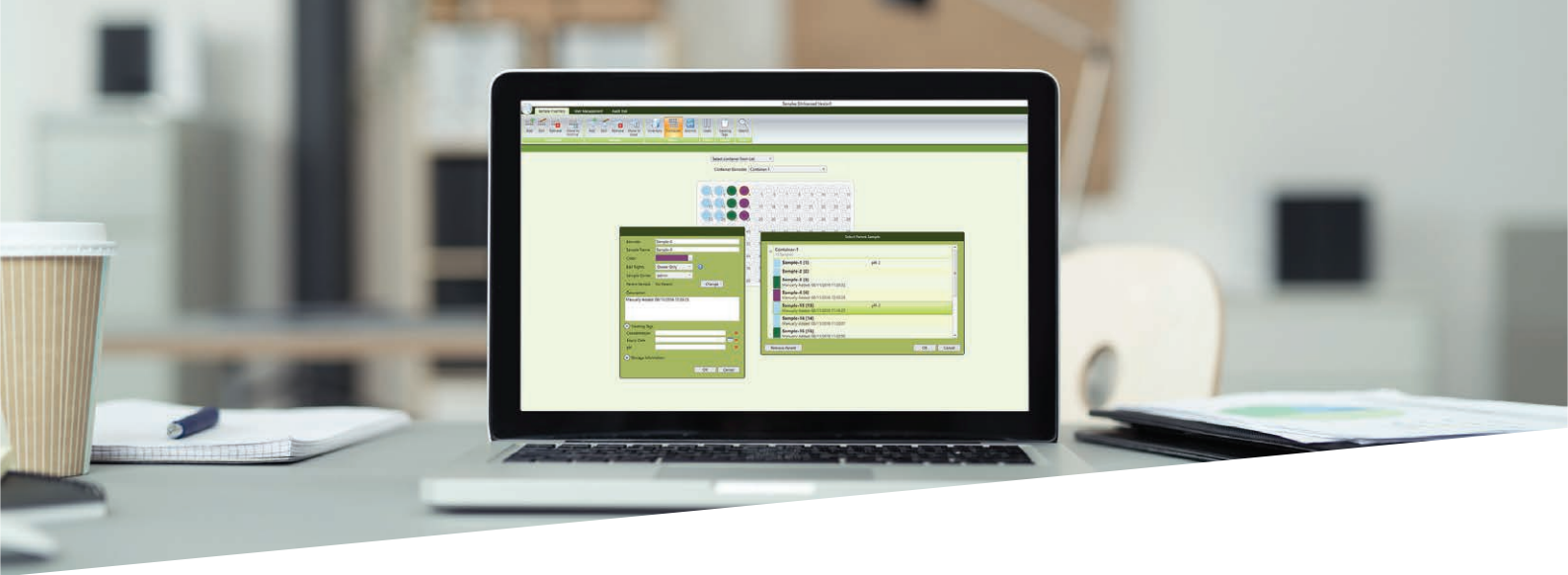


*Inventory View and Container View screens makes visualising container contents simple*

Multi-parameter searching allows you to combine search terms to locate specific samples. Samples makes it easy to search against Tracking Tag and Sample Type entries, keywords, location or date records to find the samples you are looking for. The software also lets you save regularly-used searches and customise them for future use.



*Save and customise multi-parameter searches*



## Keep Track of Your Samples

Global and individual sample audit trails allow administrators and users to keep track of samples, ensuring that all actions taken are on record.

Samples can be checked in and checked out whenever they are removed or returned from physical storage locations, and this process is tracked to individual users so you know who has those valuable samples.

## Never Lose Your Data

Our Archive function retains sample information even when a container has been permanently removed from storage, ensuring users never lose access to historical data. In addition all data stored using Samples can be automatically and regularly backed up to ensure your sample data remains safe.

## Developing the Right Solutions for You

- Samples can be installed on a single computer using our 'fixed' licence option, or, for networked operations, we can also offer our 'floating' licence solution. Another option is the 'multi-database' set-up which provides each individual user with their own, completely separate, database.
- All configuration options are provided for a low one-off purchase price with no annual renewal fees.
- If there are additional features you'd like our software to offer, we can develop a package tailored to your needs.

---

For more information, to arrange a demonstration, or for personalised advice about Samples software and our affordable software licencing options, please visit our website or get in touch using the contact details provided below.

Tel: +44 (0)1223 855 021

Email: [info@ziath.com](mailto:info@ziath.com)

[www.ziath.com](http://www.ziath.com)

## Ordering Information

| Part Number   | Description   |
|---------------|---|
| ZTD-SPLS      | Samples software, fixed licence for one computer                    |
| ZTD-SPLS-FLT1 | Samples software, first floating licence for networked installation |
| ZTD-SPLS-FLT  | Samples software, additional floating licence                       |
| ZTD-SPLS-MDS  | Samples software, multi-database for one computer                   |