

ZIATH

DATAPAQ SINGLE USER GUIDE[®]

Version 2.40 rev 3



Ziath Ltd.

Tel +44 (0)1223 855021 • Fax +44 (0)1223 790069

www.ziath.com • sales@ziath.com •
support@ziath.com

DATAPAQ SINGLE USER GUIDE © Copyright 2008, 2009, 2010,2011, 2012, 2013, 2014, 2015 Ziath Ltd.

All Rights Reserved. **Ziath**, **DataPaq** and **DataPaq Single** are registered trademarks of Ziath Ltd. No part of this publication, in either its printed or electronic format, may be copied, reproduced or transmitted in any form or by any means, electronic or mechanical, for any purpose involving resale for profit or gain, through any form of paid, membership or subscription service, without the express permission of Ziath Ltd.

Revised 19/10/2016



THIS IS VERSION 2.40 OF THE ZIATH DATAPAQ SINGLE USER GUIDE

1 Introduction

DataPaq is a family of products that combine an imaging device with software to read 2D Data Matrix barcodes printed on the bottom of tubes. DataPaq is designed to read tubes produced by all the major manufacturers on the market including Greiner, Wheaton, Matrix, Micronic, Nunc and AbGene. **DataPaq Single** is designed to quickly and easily read a barcode located on the bottom of a single tube.

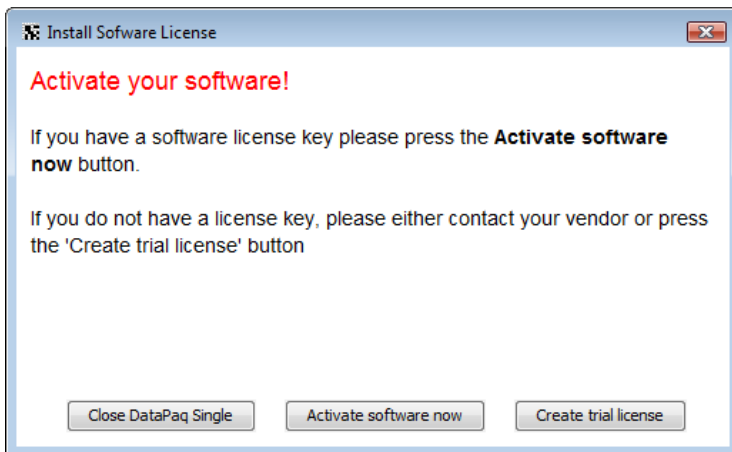
2 Installation

Before you can use **DataPaq Single** you must first install the software application. This file will be on the CD or available from the [Ziath website](http://ziath.com/index.php/downloads/software-manuals) at <http://ziath.com/index.php/downloads/software-manuals>.

Note that on certain versions of windows; your computer may attempt to download extra drivers when the scanner is connected to the computer. This will not affect the operation of the scanner – it is the user’s choice to download this software should they wish to. Either way the scanner will operate to the same level of efficiency.

The installer can be found on the CD media that came with your device. Alternatively, the latest installer can be downloaded from our website (browse to www.ziath.com and then navigate to the *downloads* section).

After installing the software, plug the reader into a spare USB port and launch the software. You will be prompted to enter the license code:



Ensure that the computer that you are installing the application on is connected to the internet and enter the software licence key that you have been provided with. After entering the key, click the *Activate* button and **DataPaq Single** will attempt to automatically register your installation.

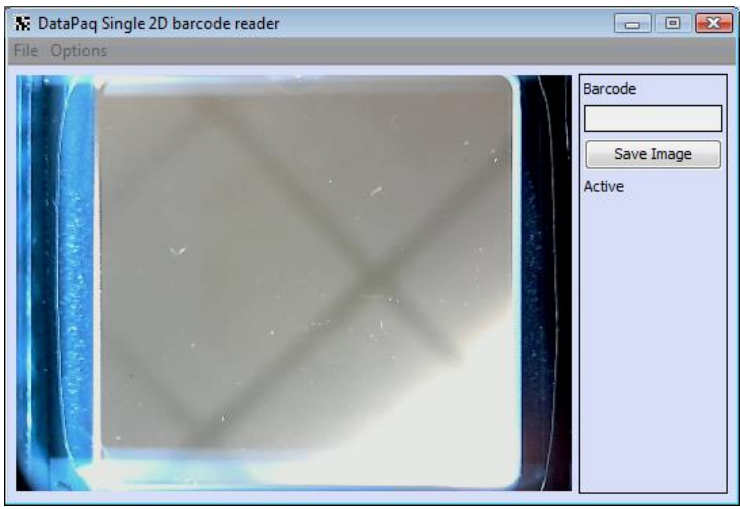
If you don't have a software license key yet and wish to simply try out the software, click the *Trial* button. This will allow you to try out DataPaq Single without needing to acquire a licence (although each barcode will have one random digit obscured by an x).

**IF AUTOMATIC REGISTRATION FAILS, PLEASE REFER
TO THE TROUBLESHOOTING INSTRUCTIONS OUTLINED ON
PAGE 7**

After you have successfully registered the software, your imaging device should automatically be detected and you are ready to get started.

3 Operation

DataPaq Single is very easy to operate; simply start the software up with the imaging device connected and the following screen will be displayed.

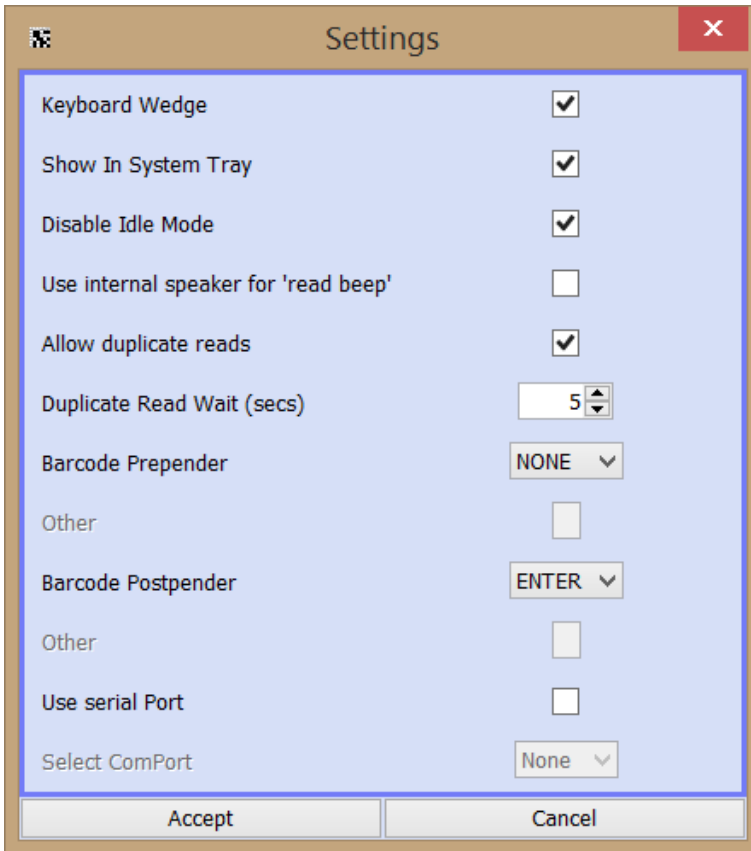


To read a barcode, place a tube onto the reader, an image of your barcode should be clearly displayed on the screen. The software will then detect the barcode and decode it. The resulting barcode is displayed in the top right hand corner of the application.



4 Configuration

DataPaq Single has a number of settings. This mode can be activated via the *Options* menu; select *Settings* to show the following dialog.



4.1 Keyboard Simulation

When the *Keyboard Wedge* checkbox is ticked, the keyboard wedge mode is activated; any barcode scanned will be entered into the computer as if the user had entered the code into the keyboard. This allows for codes scanned with **DataPaq Single** to be entered into any other application such as Excel or a LIMS system. You can choose for the barcode to be terminated by a tab character (useful to move horizontally in Excel), an Enter character or nothing.

4.2 System Tray

DataPaq Single has a *system tray* mode.

Once this mode is activated, it is also possible to minimise **DataPaq Single** so that the main window is not viewable. This mode can also be activated via the *Options* menu; once this is activated, closing the main window will hide the application to the task bar.



To show the main window again, simply double click the icon in the task bar.

To close **DataPaq Single** completely, right click the icon and then select exit from the popup menu.

4.3 Duplicate Read

DataPaq can be configured to optionally read the same barcode twice.

To allow for the same barcode to be read twice, select the *Allow Duplicate Reads* checkbox. Should this be selected, the *Duplicate Read Wait* time is the time which **DataPaq Single** will wait before registering a read again.

4.4 Internal Speaker

Should **DataPaq** be installed to a computer which does not have speakers the audible alarm may not be heard. Therefore **DataPaq** can be configured to audibly announce a read using an internal speaker on the computer.

Selecting this option will use the internal speaker; not selecting the option will use the main speakers.

4.5 Disable Idle Mode

To avoid using the computer processing power, **DataPaq** has an idle mode which will use minimal computer processing power. This mode is activated if **DataPaq** does not detect movement for a while. The idle mode can be deactivated to slightly increase scan speed.

Selecting this option will slightly increase scanning speed but will use more of the computer's processing power when the scanner is not in use.

4.6 Barcode Prepend

This will prepend the specified characters in front of the barcode when it is scanned. Note that STX and ETX are specific for RS232 communication.

4.6.1 Other

If other is picked please enter a character here

4.7 Barcode Postpend

This will postpend the specified characters in front of the barcode when it is scanned.

4.7.1 Other

If other is picked please enter a character here

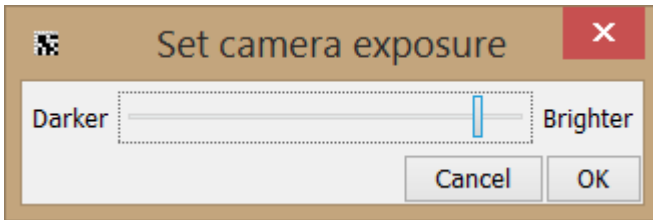
4.8 Use Serial Port

If this is selected the barcode will be transmitted on the named com port. The settings are 9600,8,N,1 with no flow control.

4.8.1 Select ComPort

This lists the available com ports on the computer

5 Set Exposure

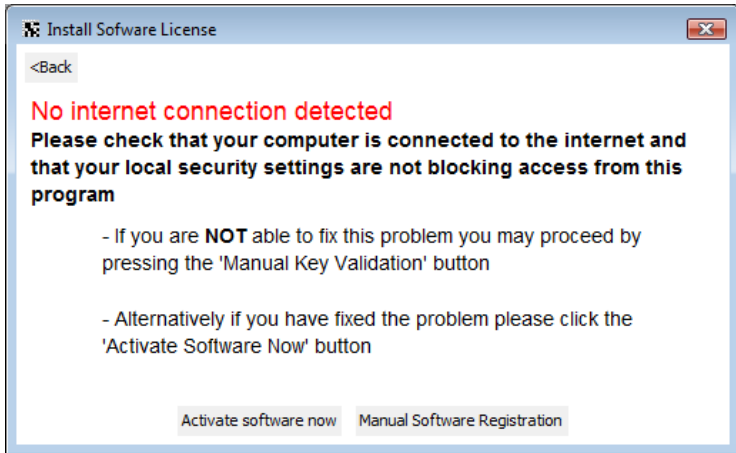


With this option you can change the exposure of the camera which may be required in an especially bright room; this allows the image to be darker and easier to read.

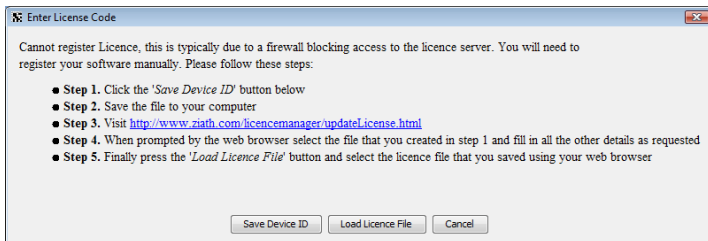
6 Troubleshooting

6.1 *Manual Registration*

If **DataPaq Single** cannot connect to the licence server (this can happen due to local security policies on your PC) then you will be prompted to carry out a manual registration.



Should the computer be connected to the internet but this still show then it is likely the internal security systems are causing the licensing process to not work. If this is the case, click '*Manual software Registration*' and the following window will appear:

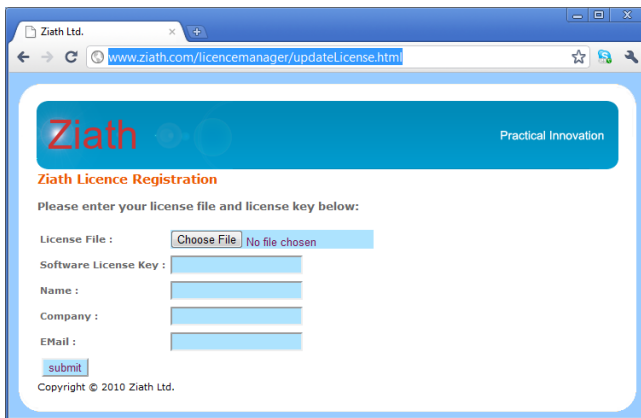


Follow the first two steps as shown in the window. When you reach step 3, click on the [DataPaq Licence Manager](http://www.ziath.com/licencemanager/updateLicense.html) link - a web browser should appear on your system, showing a page similar to the one

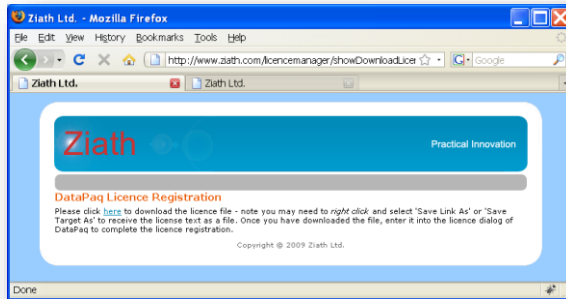
shown below. If a browser is not launched automatically when you click on the link, you should manually browse to:

<http://www.ziath.com/licencemanager/updateLicense.html>

If you need to do this then you will need to manually enter the software license key in the webpage:



Enter the details above; including the device ID file you just saved. Then click submit and the following web page will be shown:



Download the licence file by right clicking on the [here](#) link and selecting *Save Link As* (Firefox) or *Save Target As* (Internet Explorer).

Finally, press the button labelled *Load Licence File* and select the file that you just downloaded from your browser. **DataPaq** will then register your installation.

If you do not have a key, or experience problems with registration then please contact Ziath by emailing support@ziath.com

