

DataPaq™ User Guide



DataPaq™ Version 3.18
Manual Version rev 1
Ziath_DataPaq_User_Guide_v3.18_Rev1



DataPaq™ User Guide

All Rights Reserved. **Ziath™** and **DataPaq™** are trademarks of Ziath Ltd. No part of this publication, in either its printed or electronic format, may be copied, reproduced or transmitted in any form or by any means, electronic or mechanical, for any purpose involving resale for profit or gain, through any form of paid membership or subscription service, without the express permission of Ziath Ltd.

DataPaq™ User Guide© Copyright 2008, 2009, 2010, 2011, 2012, 2013, 2014, 2015, 2016, 2017, 2018, 2019,2020 Ziath Ltd.

Revised 28/7/2020

This is Version 3.18 of the DataPaq™ User Guide

Table of Contents

Introduction	9
To Connect by Remote Control	9
Installation	9
<i>Multirack Scanner Installation (ZTS-A4)</i>	9
High Speed Scanner Installation (ZTS-A6, ZTS-A62)	10
Deep Focus Scanner Installation (ZTS-AV6, ZTS-AV62)	10
Express Scanner Installation (ZTS-EXP)	10
Cube Scanner Installation (ZTS-CUBE).....	11
Mirage Scanner Installation (ZTS-MRG)	11
Linear Rack Barcode Scanner Version 2 Installation (ZTS-1DR2)	12
Registration/Licencing	12
Automatic Registration	12
Manual Registration.....	13
Administration	16
Configuration	18
Add Scanner	18
Import Rack Configuration	18
Add New Rack Group	19
Calibration.....	22
Configuration of Multirack Scanner	26
Export to Excel or Text Configuration	28
Linear (1D) Barcode Scanner Configuration	35
1) Manual Linear Scanner.	36
2) Internal Mirror Scanner	36
3) Ziath Linear Barcode Scanner	37
4) No Linear Scanner	38

Database Export Configuration.....	38
Configuration	38
Database Script	42
Execution.....	44
Time-Out Settings	46
Scan Time Questions Configuration.....	48
Activator Configuration.....	50
Other Settings	51
<i>Dev{}</i>	53
DataPaq™ Operation.....	54
Configuring Decoding of Racks with Orientation Barcodes	57
Error in Reading Orientation Barcode.....	58
Removing Orientation Barcode.....	59
Export Formats.....	59
Excel	59
Text	60
XML	60
Appendix A	61
Reserved Words	61
Appendix B	62
Customising Export Text Format.....	62
Date Format Symbols.....	65
Appendix C	66
Warranty	66
Appendix D	67
CE and RoHS Certificates	67

Table of Figures

Figure 1 : Linear Rack Barcode Scanner, Version 2, attached to Ziath 2D barcode scanner	12
Figure 2: Manual registration screen 1.....	12
Figure 3 : Licence Registration Dialogue.....	13
Figure 4 : No Internet Connection Dialogue	14
Figure 5 : Manual Licence Registration Dialogue	14
Figure 6 : Manual Licence Registration Webpage	14
Figure 7 : Manual Licence Registration Download	15
Figure 8 : Administrator Dialog	16
Figure 9: Administrator Login	16
Figure 10 : Security Activation	17
Figure 11 : Security Permission Exclusion.....	17
Figure 12 : Add Scanner Configuration	18
Figure 13 : Main User Interface, New Scanner	18
Figure 14 : Configuration Menu	19
Figure 15: Browse Menu	19
Figure 16: Example of Rack group image for an imported rack.....	19
Figure 17: Configuration menu	20
Figure 18: Select Rack Type User Interface	20
Figure 19: Configure the scan	21
Figure 20: Advanced settings for configuring the scan on an express	21

Figure 21: Rack Group ImageView	22
Figure 22: Calibrate Rack Group	23
Figure 23: Calibration Instructions	23
Figure 24: Scan progress	24
Figure 25: Successful Calibration	24
Figure 26: Manual Calibration Dialogue	25
Figure 27: Image of the Rack with a White Overlay.....	25
Figure 28: Overlay corrected.....	25
Figure 29: Adding Rack to the Multirack Scanner	26
Figure 30: Choosing the mask type for the Multirack Scanner.....	26
Figure 31: Choosing the Rack Type for the Multirack Scanner	27
Figure 32: Rack Group Configuration for Multirack Scanner	27
Figure 33: Configuration Menu	28
Figure 34: File Export Configuration Dialogue.....	28
Figure 35: Excel Export Template	30
Figure 36: Text Export Template.....	33
Figure 37: Test Scan Time Export - Results.....	33
Figure 38: Test Scan Time Export –showing error in format.....	34
Figure 39: Test Scan Time Export – Results showing error in format.....	34
Figure 40: Menu Configuration Selection.....	35
Figure 41: Configuration window	35
Figure 42: Configure Barcode Dialogue	36
Figure 43: Internal Mirror Scanner	37

Figure 44: Ziath Linear Barcode Scanner Options	37
Figure 45: Select Option Menu	38
Figure 46: Configuration Front Page	39
Figure 47: Database Configuration Front Page	39
Figure 48: Database Connection Configuration	40
Figure 49: Successful Connection Dialogue [1]	42
Figure 50: Successful Connection Dialogue [2]	42
Figure 51: Option Menu Selection	42
Figure 52: Configuration Front Page	43
Figure 53 : Database Connection Script Editor	43
Figure 54: Script Preview	45
Figure 55: Select options menu	46
Figure 56: Configure dialogue	47
Figure 57: Time-Out Settings	47
Figure 58: Select Options Menu	48
Figure 59: Configure Dialogue	48
Figure 60: Scan Time Questions Dialogue	49
Figure 61: Accessing Options from the Configure menu	50
Figure 62: Configure Dialogue	50
Figure 63: Activator Options Configuration	51
Figure 64: Configure Menu	51
Figure 65: Front page of Options Menu	52
Figure 66: Other Settings Configuration	52

Figure 67: Dev{} Dialog.....	53
Figure 68: Main Operation Dialogue	54
Figure 69: Scan Time Questions Dialogue	54
Figure 70: Cancel Dialogue.....	55
Figure 71: Result Window	55
Figure 72: Results window showing Scan Time Questions	56
Figure 73: Orientation Rack Dialogue Menu	57
Figure 74: Adding Orientation Barcodes	57
Figure 75: Choosing a different location for the orientation barcode	58
Figure 76: Orientation Barcode Error Message	58
Figure 77: The red error mark shows where DataPaq™ was trying to read the code	59
Figure 78: Remove Orientation Barcode	59
Figure 79: Example Excel Output	60
Figure 80: Example Text Output	60

Introduction

The following is a brief set of instructions on installing and configuring your **DataPaq™** application.

To Connect by Remote Control

Please refer to the manual: **DataPaq™ Remote Control User Manual**. This can be found on the supplied disk, or downloaded from www.ziath.com

Installation

Successful set up of the scanner requires the installation of

- (a) A driver program to run the scanner device and
- (b) The **DataPaq™** scanning software program.

These programs are provided on the installation disk; alternatively, the most current versions can be downloaded from the Ziath website.

Installation instructions are below. Download and install the appropriate driver *before* connecting the scanner and installing the **DataPaq™** software. (If Windows Vista, Windows 7 or Windows 8 is the used operating system, the installer will request permission to install onto the computer. Ensure access is granted to allow **DataPaq™** to install.)

**BEFORE INSTALLING DATAPAQ™ ENSURE THE TRANSPORT LOCK ON
THE SCANNER IS IN THE UNLOCKED POSITION
(NOT APPLICABLE FOR THE DATAPAQ™ EXPRESS, MIRAGE OR CUBE
READERS)**

Multirack Scanner Installation (ZTS-A4)

1. Install the driver: The driver for this is on the installation disk in the folder *Multiple Rack Scanner Driver*; alternatively, **to ensure the most current version is being used**, download it from:
<http://ziath.com/index.php/downloads/software-manuals>
Before plugging the scanner in or installing **DataPaq™** install the driver from either of these two sources.
2. Release the transport lock on the scanner (top of the scanner in the top right position).

3. Connect the scanner to the computer and switch on using the button at the back by the power and USB ports.
4. Install **DataPaq™**.

High Speed Scanner Installation (ZTS-A6, ZTS-A62)

1. Install the driver: the driver for this is on the installation disk in the folder *Single Rack Standard Focus Driver*; alternatively, **to ensure the most current version is being used**, download it from:
<http://www.ziath.com/index.php/downloads/software-manuals>
If downloading from the website, extract the zip file. Before plugging the scanner in or installing **DataPaq™** install the driver from either of these two sources. Double click *setup.exe* to initiate the setup program and follow the on-screen instructions.
2. Release the transport lock (at the back of the scanner next to the power and USB ports)
3. Connect the scanner to the computer and install **DataPaq™**

Deep Focus Scanner Installation (ZTS-AV6, ZTS-AV62)

1. Install the driver: The driver for this will be on the installation disk in the folder *Single Rack Deep Focus Driver*. Alternatively, **to ensure the most current version is being used**, download it from:
<http://www.ziath.com/index.php/downloads/software-manuals>
If downloading from the website, extract the zip file. Before plugging the scanner in or installing **DataPaq™**, install the driver from either of these two sources. Double click *setup.exe* to initiate the setup program and follow the on-screen instructions.
2. Release the transport lock (underneath the scanner)
3. Connect the scanner to the computer and install **DataPaq™**

Express Scanner Installation (ZTS-EXP)

Please note that there are two versions of the express scanner; version 1 and version 2. The version 1 was discontinued in 2016 so unless the express being installed is old please access the version 2 drivers.

1. Install the controller and imager driver: The driver for this will be on the installation disk in the folder *Express Scanner Driver*. Alternatively, **to ensure the most current version is being used**, download it from:
<http://www.ziath.com/index.php/downloads/software-manuals>
If downloading from the website, extract the zip file. Before plugging the scanner in or installing **DataPaq™**, install the driver from either of these two sources. Double click *setup.exe* to initiate

the setup program and follow the on-screen instructions.

2. Connect the DIN power cable from the controller to the Express
3. Connect the HDMI cable from the controller to the Express
4. Plug the power cable into the controller
5. Plug the USB cable into the controller, but not into the computer
6. Connect the power supply to the mains
7. Turn the controller on; wait for the red lights to first flash and then go out.
8. Plug the USB cable into the scanner
9. Plug the USB cable into the PC
10. Wait for the PC to detect and initialise the scanner
11. Install **DataPaq™**

Cube Scanner Installation (ZTS-CUBE)

Please note that there are two versions of the cube scanner; version 1 and version 2. The version 1 was discontinued in 2017 so unless the express being installed is old please access the version 2 drivers.

1. Install the cube scanner driver: The driver for this will be on the installation disk in the folder *Cube Scanner Driver*. Alternatively, **to ensure the most current version is being used**, download it from: <http://www.ziath.com/index.php/downloads/software-manuals>

If downloading from the website, extract the zip file. Before plugging the scanner in or installing **DataPaq™**, install the driver from either of these two sources. Double click *setup.exe* to initiate the setup program and follow the on-screen instructions.

2. Plug the USB cable into the controller, but not into the computer
3. Connect the power supply to the mains
4. Turn the cube on; wait for the red lights to turn green.
5. Plug the USB cable into the scanner
6. Plug the USB cable into the PC
7. Wait for the PC to detect and initialise the scanner
8. Install **DataPaq™**

Mirage Scanner Installation (ZTS-MRG)

1. Install Mirage scanner driver: The driver for this will be on the installation disk in the folder *Mirage Scanner Driver*. Alternatively, **to ensure the most current version is being used**, download it from:

If downloading from the website, extract the zip file. Before plugging the scanner in or installing **DataPaq™**, install the driver from either of these two sources. Double click *setup.exe* to initiate the setup program and follow the on-screen instructions.

2. Plug the power supply into the scanner
3. Connect the power supply to the mains
4. Plug the USB cable into the scanner
5. Plug the USB cable into the PC
6. Wait for the PC to detect and initialise the scanner
7. Install **DataPaq™**

Linear Rack Barcode Scanner Version 2 Installation (ZTS-1DR2)



Figure 1 : Linear Rack Barcode Scanner, Version 2, attached to Ziath 2D barcode scanner

The appropriate bracket for the scanner needs to be attached to the scanner. This has a strong magnet to accurately locate the linear scanner.

This does not need a driver; simply attach the scanner to a USB port.

Registration/Licencing

Automatic Registration

The first time the software is run, this screen will appear:

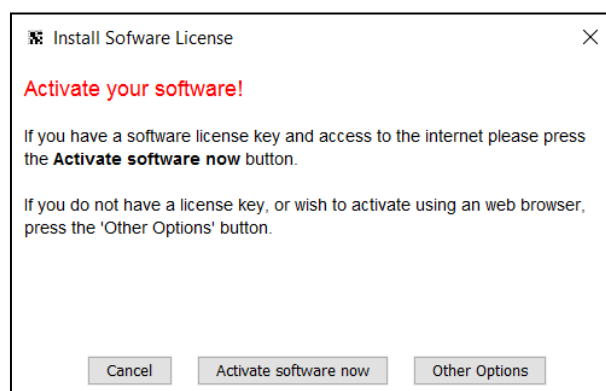


Figure 2: Manual registration screen 1

Click on Activate software now and a new window will appear:

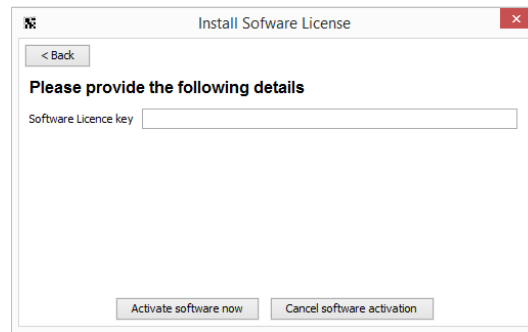
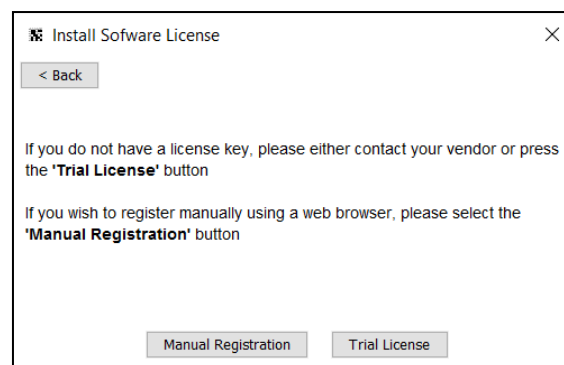


Figure 3 : Licence Registration Dialogue

Ensure the computer is connected to the internet and enter the licence key enclosed with the scanner. Click *Activate software now* and **DataPaq™** will start to register the installation. If **DataPaq™** cannot connect to the licence server (perhaps due to a local security restriction on your system, for example) it will prompt for manual registration.

When 'other options' is clicked the following window appears:



From here you can either select manual registration which is described below. If you select Trial Licence the software will start but **10% of the scanned barcodes will be obscured with the word TRIAL.**

Manual Registration

If the following window appears, there is a problem registering the licence automatically, this is usually caused by security software on the computer.

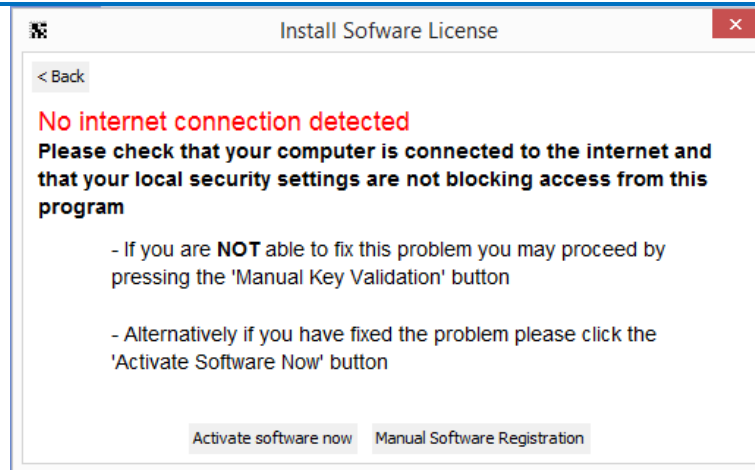


Figure 4 : No Internet Connection Dialogue

Click on *Manual Software Registration* and the following window will appear:

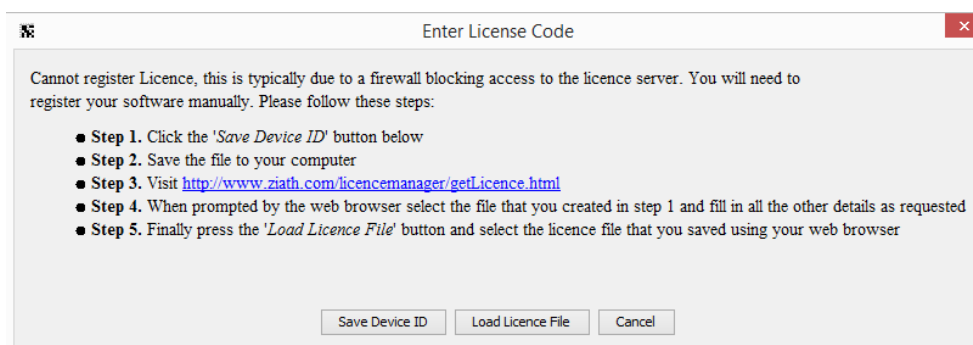


Figure 5 : Manual Licence Registration Dialogue

Follow the steps provided and click on the link shown above.

- Click “Save Device ID” and save the file to the Desktop.
- Navigate to the link shown, either by clicking on it, or by typing it directly into your browser.
- Select the file that was just created on the Desktop
- Enter the Licence Key
- Click “submit”

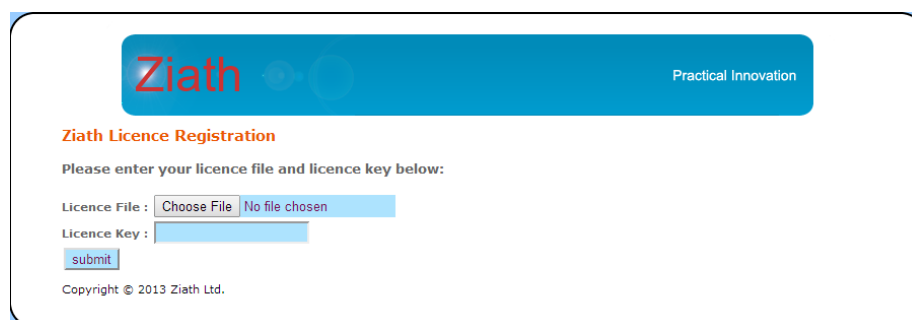


Figure 6 : Manual Licence Registration Webpage

The browser will show this page:

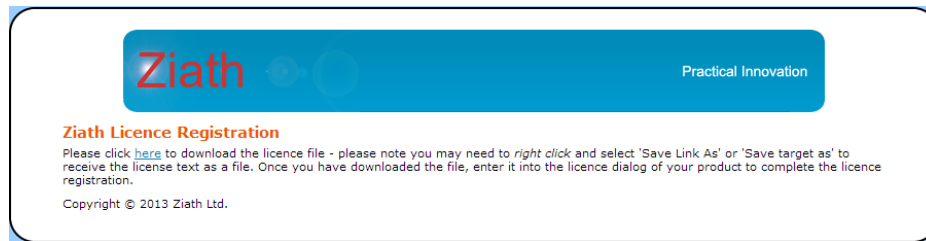


Figure 7 : Manual Licence Registration Download

- Download the licence file by right clicking on the “here” link
- Select *Save Link As* (Firefox and Chrome) or *Save Target As* (Internet Explorer)
- Save the file to the Desktop
- Return to the DataPaq user interface
- Select *Load Licence File*
- Load the downloaded file (from the last step)
- **DataPaq™** will register the installation.

If you do not have a licence key or experience problems with this step, contact support@ziath.com.

Administration

DataPaq can be setup to require a password to be entered if any settings are to be changed. When DataPaq is first installed you will be prompted for the administrator password. After this has been entered and DataPaq started you can log in as administrator as shown below:

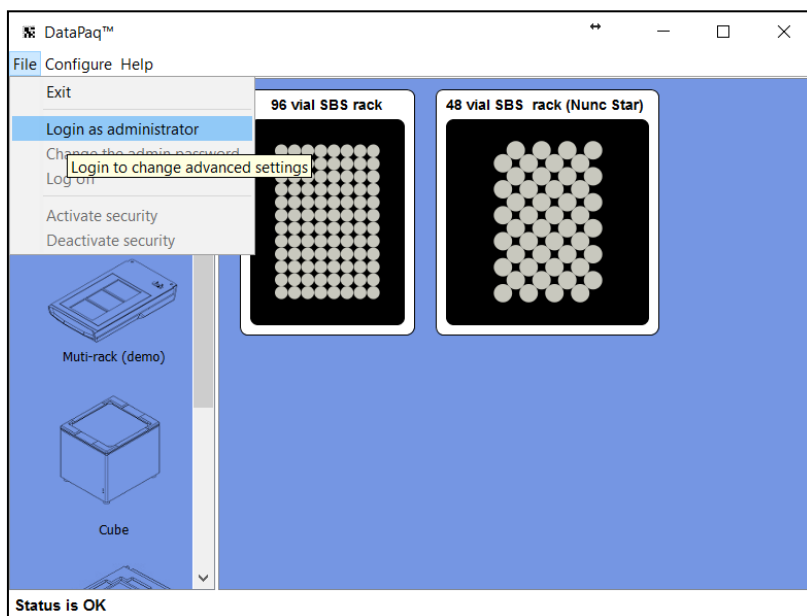


Figure 8 : Administrator Dialog

Enter the password into the dialog:

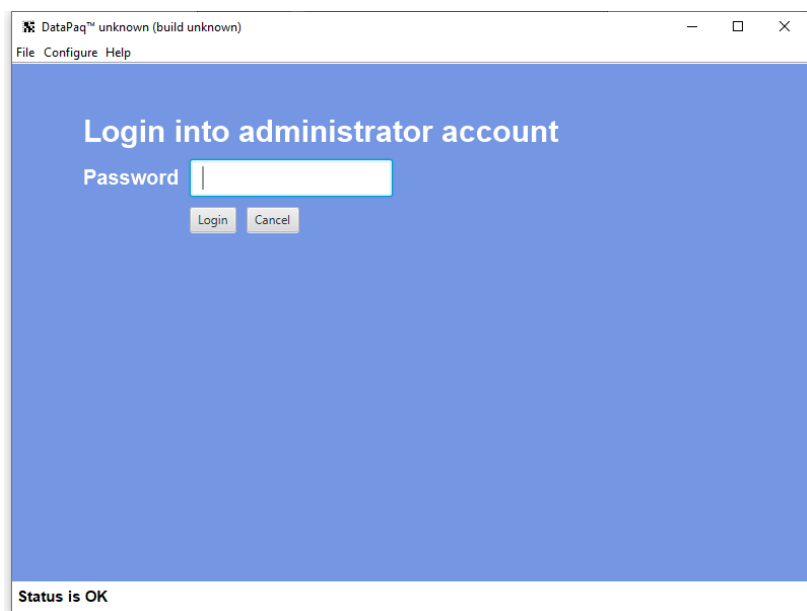


Figure 9: Administrator Login

From here it is now possible to activate the security:

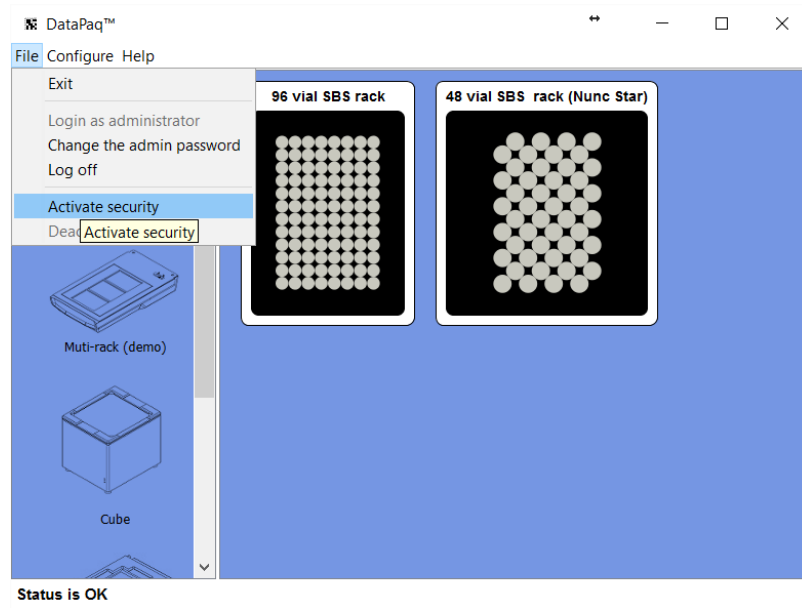


Figure 10 : Security Activation

Once this is activated and the administrator is logged off; any attempt to modify the settings will result in the following message:

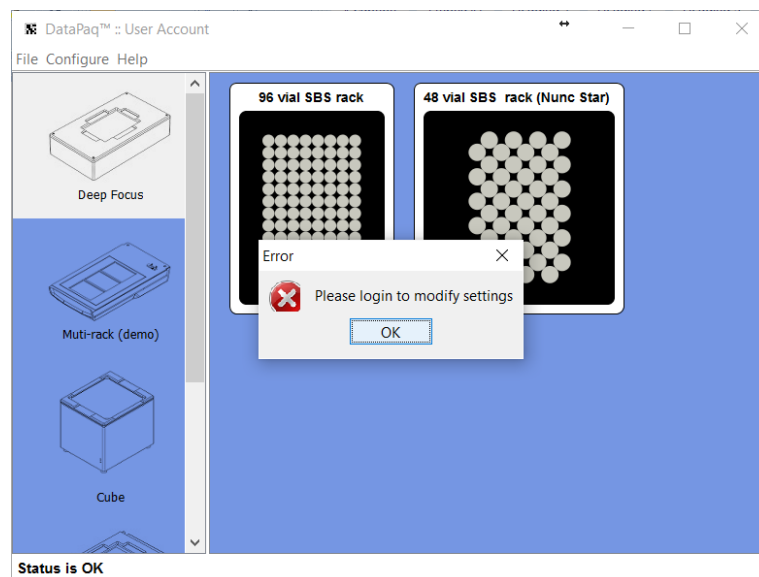


Figure 11 : Security Permission Exclusion

From this menu you can also change the password and deactivate the security settings. Any attempt to manually alter the settings on the hard drive will disable DataPac until you enter the administrator password. Note that if 'User Account' is displayed in the window title then security mode is enabled.

Configuration

Add Scanner

1. *Configure >Add Scanner* from the menu:

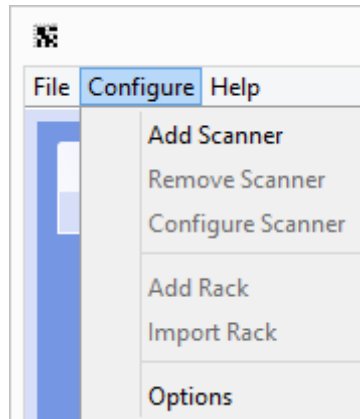


Figure 12 : Add Scanner Configuration

DataPac™ will display a dialog to allow you to input the scanner setup. *Only scanners that are connected and switched on will be shown.* Enter a name for the scanner and select the scanner you wish to configure if more than one scanner is connected. The A1 mirror option will reverse the orientation of the rack placed onto the scanner.

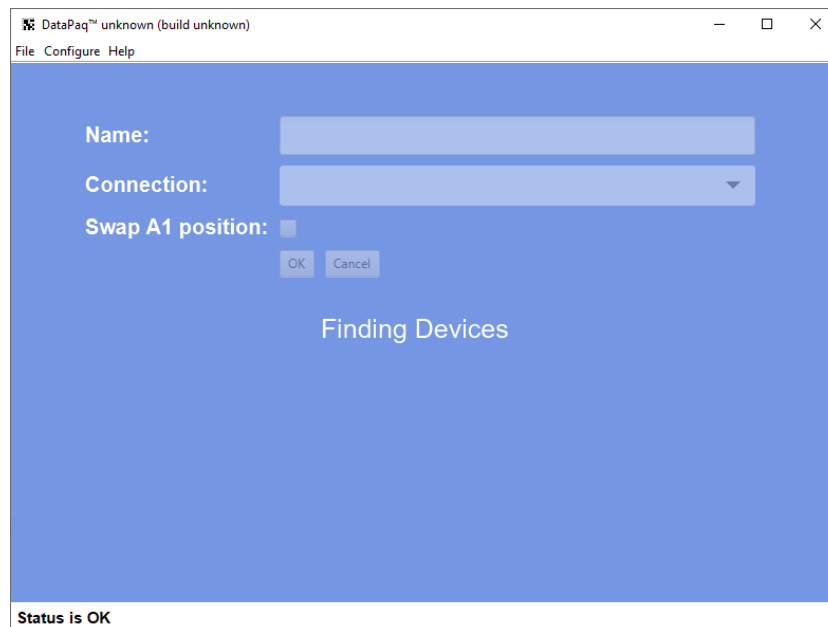


Figure 13 : Main User Interface, New Scanner

Import Rack Configuration

If there is a pre-configured import file for a rack group supplied to you by Ziath or your support agent;

this section will allow you to load it into DataPaq. To perform this, please select *Configure > Import Rack* from the menu. This also configures the scanner:

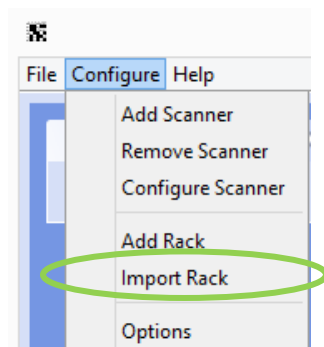


Figure 14 : Configuration Menu

Browse to the rack group XML file:

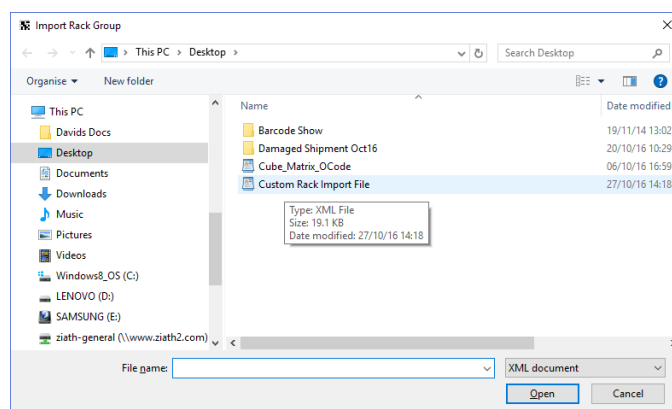


Figure 15: Browse Menu

Click *Open* and the rack group is added. The rack and the scanner are pre-calibrated:

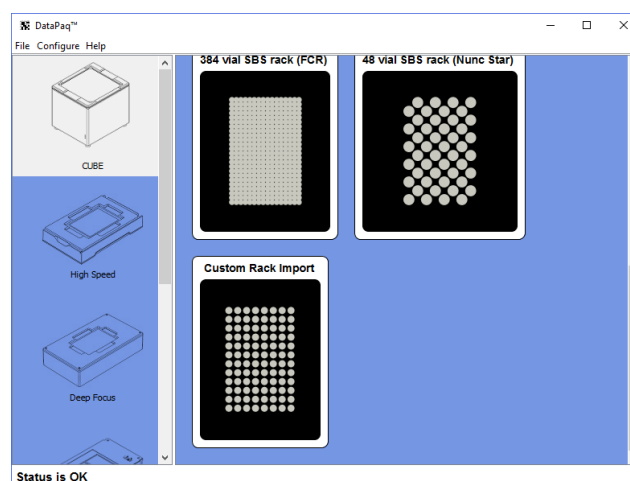


Figure 16: Example of Rack group image for an imported rack

Add New Rack Group

A rack group sets the template and configuration of the particular rack types to be scanned E.g.

Standard SBS with 96 tube positions, SBS layout with 48x2ml tube positions etc.

1. To add a rack group, select *Configure>Add Rack* from the menu.

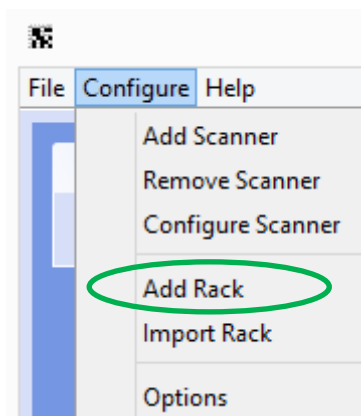


Figure 17: Configuration menu

2. From the list select the appropriate rack group; (the rack orientation is automatically set for the type of scanner chosen in “Add Scanner”, above. In addition, only racks available for that scanner type are shown). Here we have selected the 96 vial SBS rack, as shown in the second row down and on the left of the following figure:

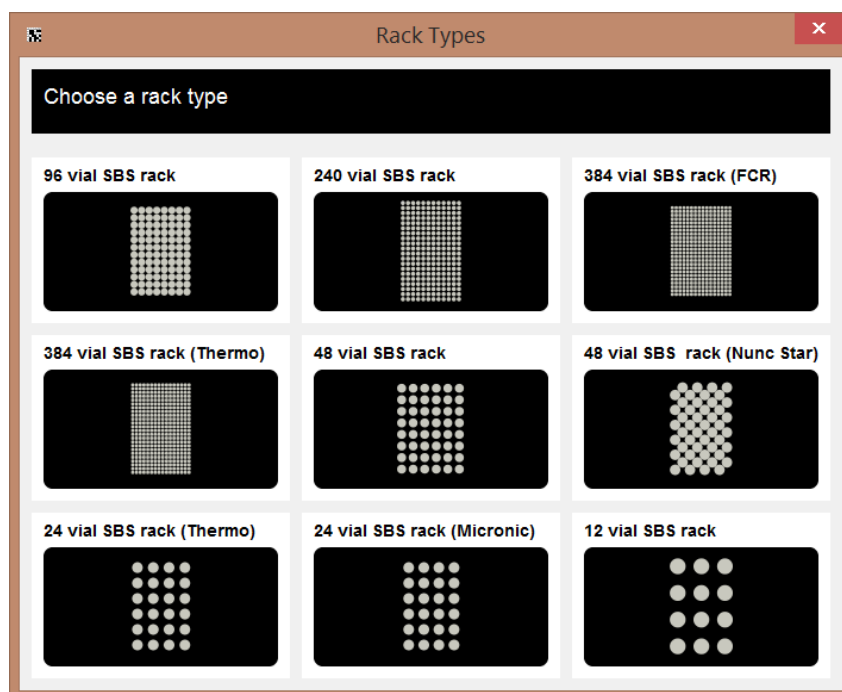


Figure 18: Select Rack Type User Interface

2. A prompt appears to Configure the scan (Refer to Figure 19):
 - a. Enter a name for the rack group
 - b. The unique ID is used for remote interaction. If this feature is being used, select an ID to

use for the remote interface – ensure the system integrator and/or automation scientist knows what this ID is.

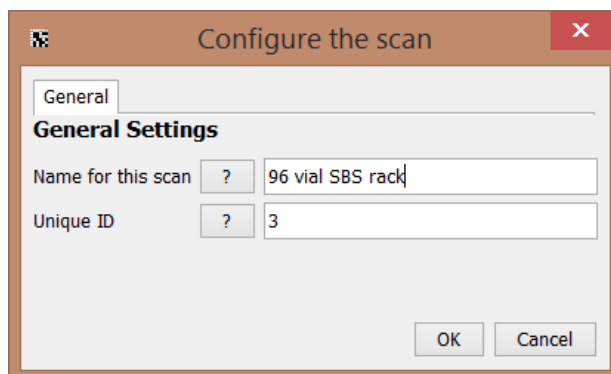


Figure 19: Configure the scan

The first tab in the figure above shows the General Settings. There is a second tab called advanced which is shown on some scanners, which if clicked displays options specific to the scanner. One example is the Express which has a further setting in the scan configuration under the “Advanced” tab, where the user is able to set the exposure of the camera. The Express will automatically be detected by DataPac™ and the option given to change the setting.

As the Express is a camera, the higher the exposure, the brighter the image. This might need to be altered if using a custom rack or an unusual situation, such as very bright light.

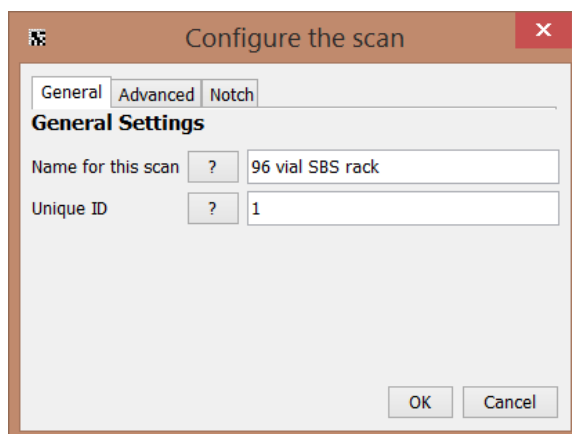
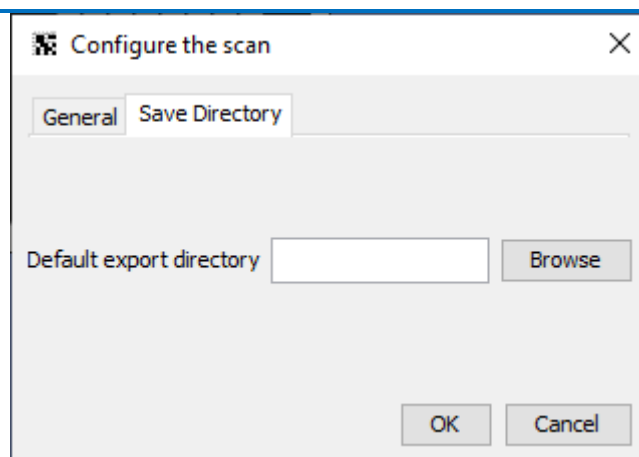


Figure 20: Advanced settings for configuring the scan on an express

On all plate groups the option to override the default save directory to save the scan results to is available. An extra tab is available from version 3.17 onwards which allows this directory to be specified:



If this is blank the default directory will be used but if it is completed this directory will be exported to when a scan completes.

3. The layout for this rack group will be displayed:

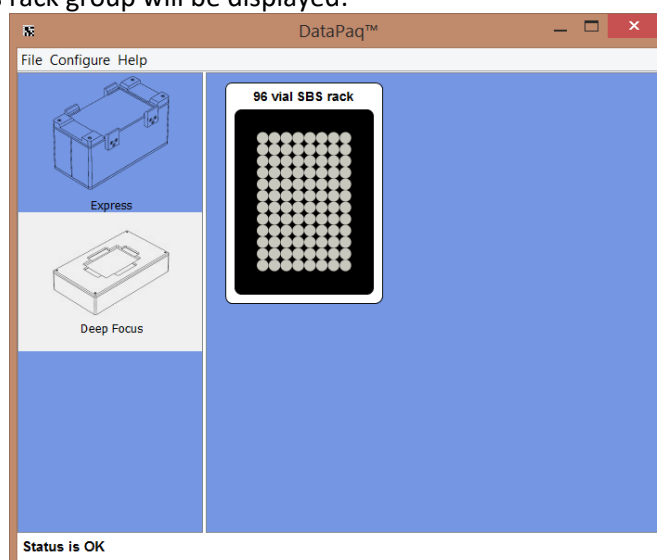


Figure 21: Rack Group ImageView

Calibration

On first use the High Speed scanners need to be calibrated to detect the rack and the locations of the tubes in the rack. This only needs to be done once for that rack group.

NB: only the High Speed scanners need to be calibrated although the Deep Focus can be forced to calibrate.

Automatic Calibration:

1. The first time a rack is scanned with the **High Speed** scanner; **DataPaq™** will calibrate the rack group. To do this either click the rack image (the first time after the rack has been added) or right click the rack and select *Calibrate rack*.

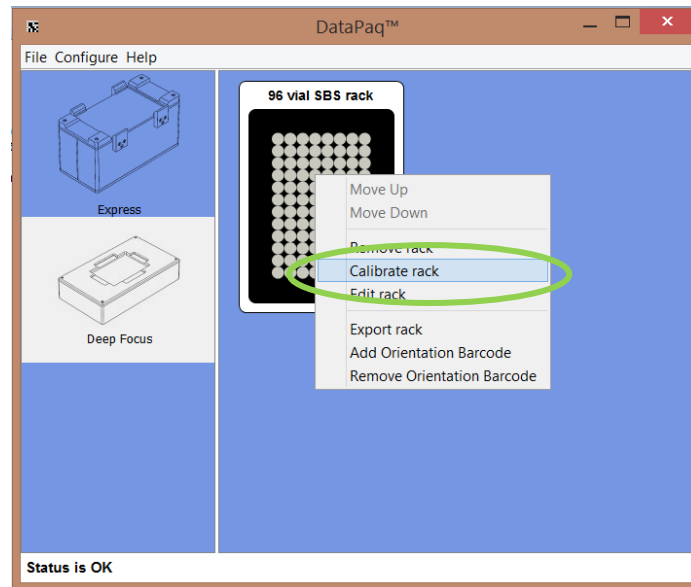


Figure 22: Calibrate Rack Group

2. As prompted, place a **full** rack on the scanner and click *Start Calibrating*:

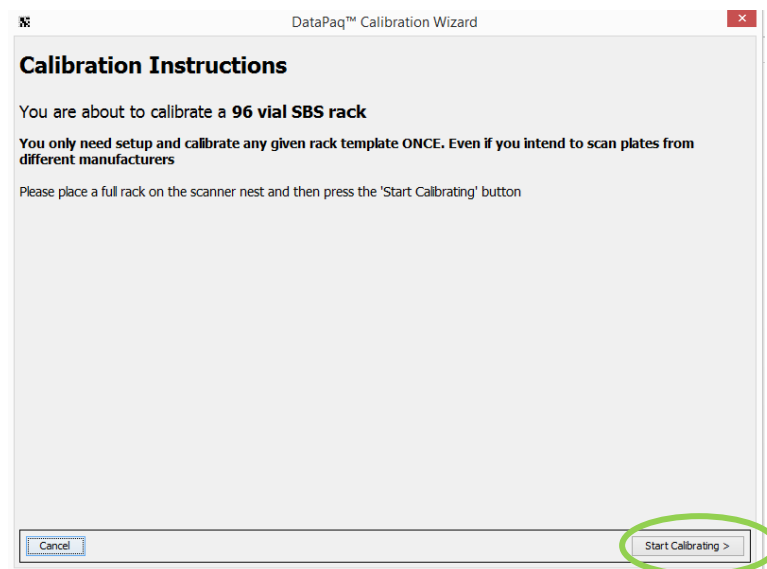


Figure 23: Calibration Instructions

The scanner will scan the rack for the first time:

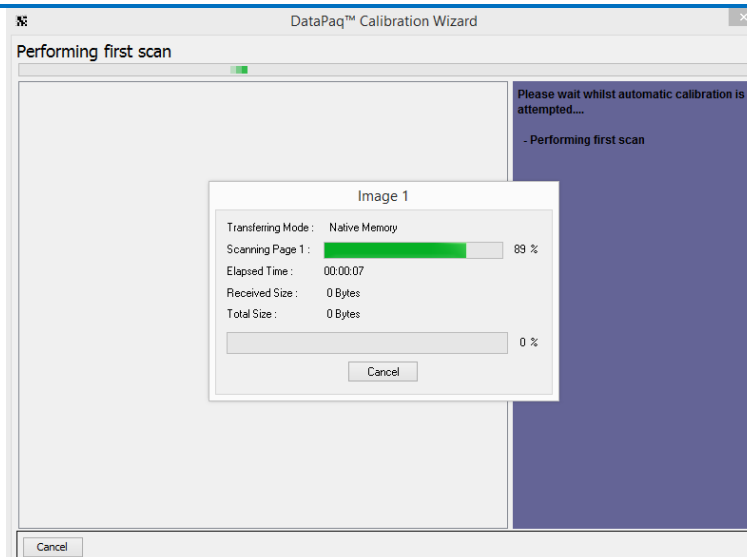


Figure 24: Scan progress

3. The scanner will scan once more to locate the rack and tubes. If calibration is successful, click *Finish*.



Figure 25: Successful Calibration

4. On rare occasions a rack may not be calibrated correctly due to environmental lighting, missing tubes or damage to the rack. The scanner will need to be manually calibrated.

Manual Calibration

1. If the automated calibration has not detected the rack, click *Yes - Manually Calibrate*

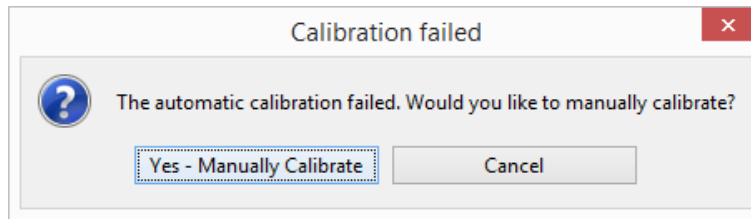


Figure 26: Manual Calibration Dialogue

2. A prompt will appear to start Calibration again. Click *Start Calibrating* to begin.
3. The scanner will scan to locate the rack. The image of the rack will be shown, with a white overlay to show where the software thinks the rack is placed:

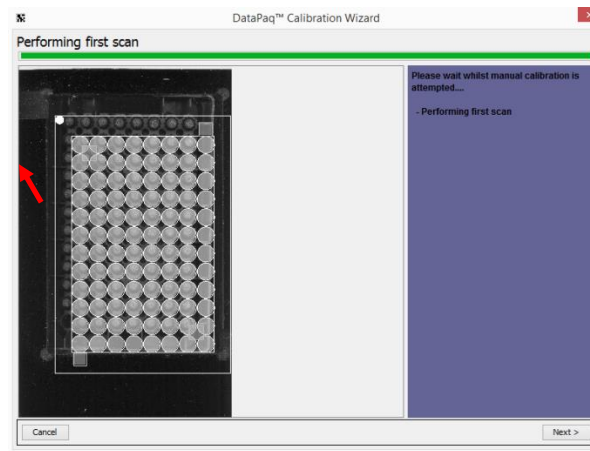


Figure 27: Image of the Rack with a White Overlay

4. Move the cursor over the white overlay and drag so it is overlaid over the rack.



Figure 28: Overlay corrected

5. Then click *Next*, and the scanner will scan the rack again. It will again show the rack image and the white overlay, reposition the white overlay. *This process is teaching the software where the tube positions are and creating the correct offset. Do not be alarmed when, on the second scan, the*

white overlay is not positioned directly over the tubes this is deliberate.

6. Click *Finish*. The manual calibration is now complete.

Configuration of Multirack Scanner

Due to the many varied ways in which a Multirack scanner can be configured, the setup for this is different than for the single rack scanners. The method to add the scanner is the same as for the single-rack scanners (*Configure > Add Scanner*).

Then the types of racks that are being used will need to be added. Click on *Configure > Add Rack*:

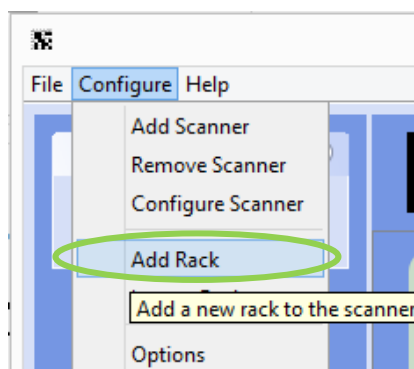


Figure 29: Adding Rack to the Multirack Scanner

1. A prompt appears to choose the mask that is being used on the scanner. From the drop-down menu, choose the configuration of racks. There is also a diagrammatical representation below the drop-down menu.

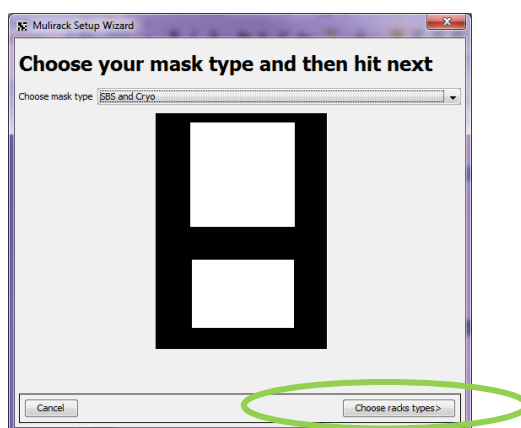


Figure 30: Choosing the mask type for the Multirack Scanner

2. Click on *Choose rack types* in the lower right corner of the window.
3. Choose the rack types to be placed in each location. Please note that only racks that 'fit' into the location are displayed for the location.

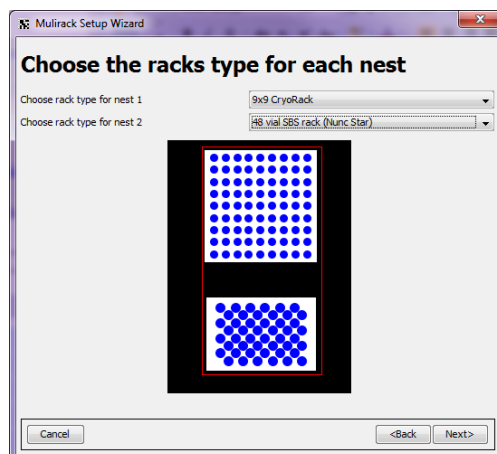


Figure 31: Choosing the Rack Type for the Multirack Scanner

4. Click *Next*.
5. Configure the racks
 - a. Enter a name for the rack group.
 - b. The unique ID is used for remote interaction. If this feature is being used, select an ID to use for the remote interface – ensure the system integrator and/or automation scientist knows what this ID is.

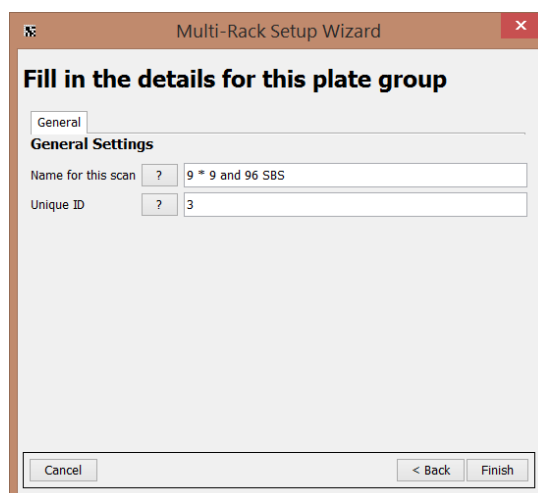


Figure 32: Rack Group Configuration for Multirack Scanner

6. Click *Finish*

The scanner is now ready to be used.

Please note, the Multitrack scanner does not need to be calibrated. The above instructions include all the configuration the scanner requires.

Export to Excel or Text Configuration

To access the Export Configuration Options, go to *Configure > Options* from the top menu:

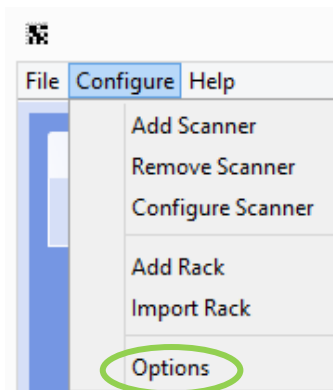


Figure 33: Configuration Menu

The following dialogue is shown:

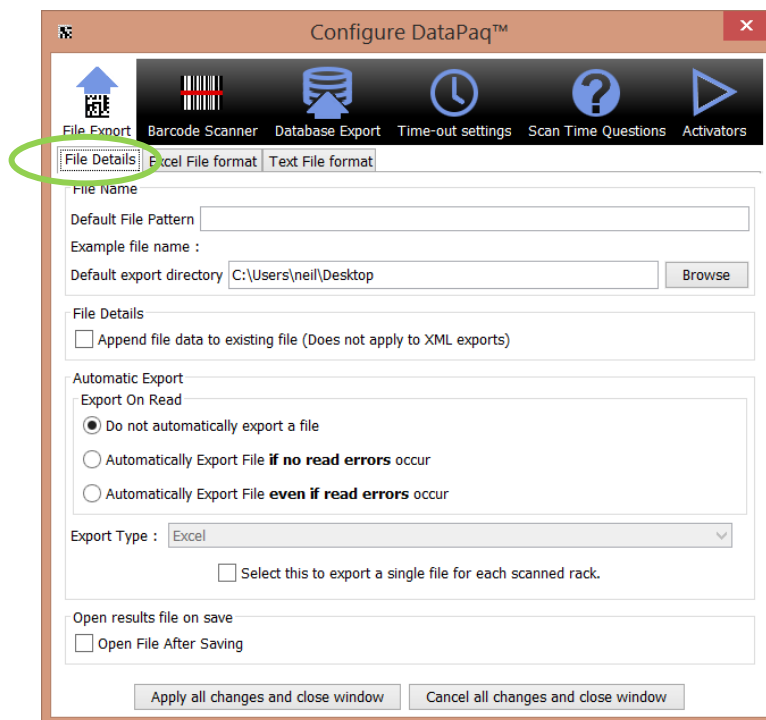


Figure 34: File Export Configuration Dialogue

On this dialogue there are three tabbed sections.

File Details: The first tab, entitled '*File Details*', has a few options for the file details:

- **Default File Pattern** – this is the default file name which will appear in the *Save as file* chooser or will be saved automatically if automatic export is selected (see below). Note the substitution for the special elements as follows:
 - `<date>` – places the date in the file name
 - `<time>` – places the time in the file name
 - `<n>` – places the rack number (or ALL if all racks are exported) in the filename
 - `<barcode>` – places the barcode in the filename (if all racks are exported the barcodes are separated with an underscore) text
 - `<groupname>` - gives the name of the group of samples being scanned
 - `<uniqueid>` - unique ID given to the scan

An automatic extension is shown beneath as the text is entered. In addition, be aware this pattern excludes the extension for the file name if exporting a text file; for an Excel file the extension `.xls` will be added if one is not already present and for XML `.xml` will be added.

- **Default Export Directory** – this is the default save directory which will be used in the *Save as file* chooser or will be saved automatically if automatic export is selected (see below). Note that this can be overridden on an individual plate group as detailed on page 22.
- **File Details** – if the file to be saved to already exists, data will be appended to the file instead of being overwritten and/or a dialogue warning of being overwritten is displayed. If the export is text, the data will be written at the end of the file and if the export is Excel, a new Excel sheet will be written. Note that this is ignored if export type is XML as it is not possible to append to an XML file.
- **Automatic Export** – if this is selected after scanning, the resulting data from the scan will automatically be saved using the options in this dialogue. There are two choices for the export; either to write the data if there are no read errors detected (only empty or confirmed reads are detected) or to always write the data regardless of the results in the read.
- **Export Type** – if automatic export is selected, this determines the format which will be automatically exported. The options are Text, Excel and XML.
- **Open file after saving** – if this is selected the file will be opened directly after saving according to the type of file it is; Excel will open excel files and Notepad will open text files.

The second tab entitled '*Excel File Format*' allows the editing of the Excel file format columns. The dialogue shown below allows this function.

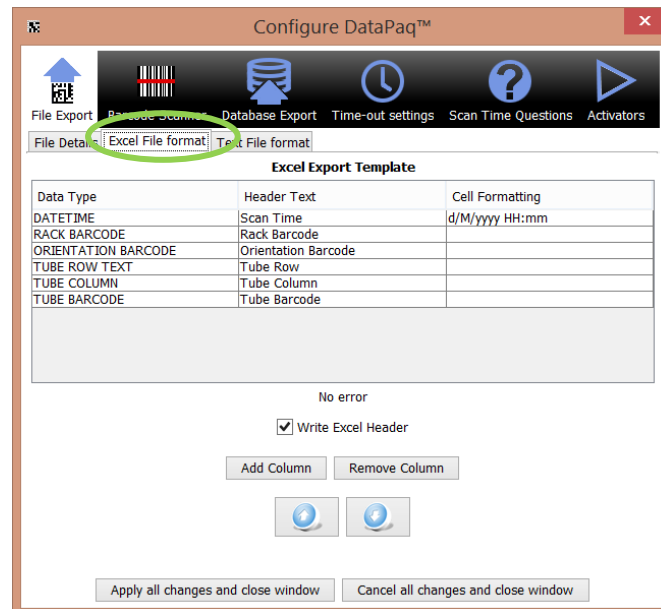


Figure 35: Excel Export Template

The details of the user interface are as follows:

Excel File Format

Each line represents a column in the export file. The first line represents the first column in the Excel sheet, the second line as the second column and so on. There are a limited number of parameters shown. Should further "Data Types" wish to be entered, click on "Add Column" and then click on the new cell in "Data Type" and choose the type from the drop-down box.

The first column, '*DataType*', details the information that is to be exported:

Data Type	Description
Rack Barcode	barcode of the rack which has been read
Tube Barcode	barcode of the tube which has been read
Orientation Barcode	barcode on the underside of the rack
Tube Position	location of the tube, note that this has a dependent formatting string
Tube Column	column of the tube
Tube Row	row of the tube
Tube Row Text	row of the tube as text, starting from A
Date	date of the scan, note that this has a dependent formatting string
Time	time of the scan, note that this has a dependent formatting string
Datetime	time and date of the scan, note that this has a dependent formatting string

The second column, '*Header Text*', details the header text which is displayed in the Excel file:

Format Type	Description
Rack Barcode	The cell formatting column is not used. The rack barcode is simply written into the Excel sheet.
Tube Barcode	The cell formatting column is not used. The tube barcode is simply written into the Excel sheet, this is classified as a text column so that barcodes with leading zeros are not truncated.
Orientation Barcode	The cell formatting column is not used. The tube barcode is simply written into the Excel sheet, this is classified as a text column so that barcodes with leading zeros are not truncated.
Tube Row	The cell formatting column is not used. The tube row is simply written into the Excel sheet.
Tube Column	The cell formatting column is not used. The tube column is simply written into the Excel sheet.
Tube RowText	The cell formatting column is not used. The tube row text is simply written into the Excel sheet.
Tube Position	The cell formatting column defines how many digits will be used to denote the column. Input 'an' to write the column as A1, 'ann' to write the column as A01, 'annn' to write the column as A001 and so on.
Datetime	The cell formatting column details the format which the scan date and time will be shown. Below is the description of the patterns which can be defined:

The third column, '*Cell Formatting*', details how the data will be shown in the excel sheet. The exact details of the formatting for each Data Type are as below:

Letter	Date or Time Component	Presentation	Examples
G	Era designator	Text	AD
Y	Year	Year	1996; 96
M	Month in year	Month	July; Jul; 07
W	Week in year	Number	27
W	Week in month	Number	2
D	Day in year	Number	189
D	Day in month	Number	10
F	Day of week in month	Number	2
E	Day in week	Text	Tuesday; Tue
A	Am/pm marker	Text	PM
H	Hour in day (0-23)	Number	0
K	Hour in day (1-24)	Number	24
K	Hour in am/pm (0-11)	Number	0
H	Hour in am/pm (1-12)	Number	12
M	Minute in hour	Number	30
S	Second in minute	Number	55
S	Millisecond	Number	978
Z	Time zone	General time zone	Pacific Standard Time; PST;
Z	Time zone	RFC 822 time zone	-0800

Some examples are detailed below:

Date and Time Pattern	Result
yyyy.MM.dd G 'at' HH:mm:ss z	2001.07.04 AD at 12:08:56 PDT
EEE, MMM d, ''yy	Wed, Jul 4, '01
h:mm a	12:08 PM
hh 'o'clock' a, zzzz	12 o'clock PM, Pacific Daylight Time
K:mm a, z	0:08 PM, PDT
yyyyy.MMMMM.dd GGG hh:mmaaa	02001.July.04 AD 12:08 PM
EEE, d MMM yyyyHH:mm:ss Z	Wed, 4 Jul 2001 12:08:56 -0700
yyMMddHHmmssZ	010704120856-0700
yyyy-MM-dd'T'HH:mm:ss.SSSZ	2001-07-04T12:08:56.235-0700

- **Date** – presents the scan date, all formatting characters which refer to the time are not allowed in the formatting string.
- **Time** – presents the scan date, all formatting characters which refer to the date are not allowed in the formatting string.
- **No Error** – Should there be a problem with the cell formatting string while editing, this will explain the problem
- **Write Header** – If this is selected the column header will be written into the Excel sheet which is the name of the data type being written
- **Add Column** – This will add an extra column to the export template for the specified data
- **Remove Column** – This will remove the selected row from the export template
- **Up Arrow** – This will move the selected row up the table
- **Down Arrow** – This will the selected row down the table

Text File Format

The third tab is labelled '*Text File format*'; using this tab the export can be configured. The format is written in a system called a mark-up language (specifically Freemarker); this is explained in greater detail in [Appendix B](#). The export can be prepared for both scan results and scan time questions. The fields shown below can be typed in:

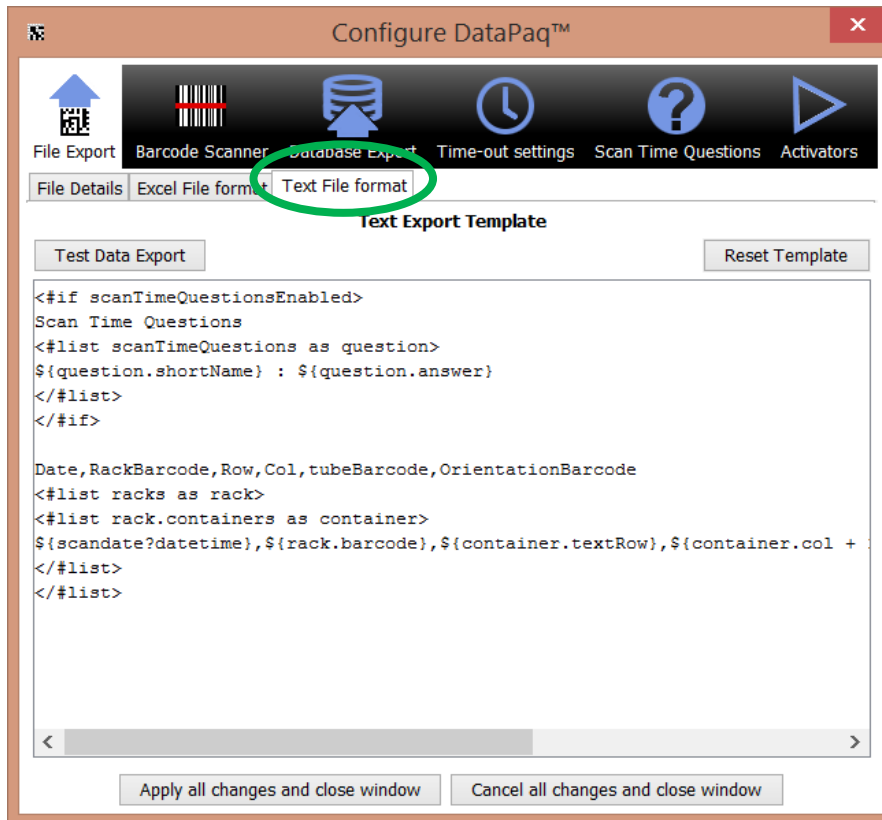


Figure 36: Text Export Template

Once a field has been edited the result can be tested by clicking the *Test Data Export* button which will display the results including any changes made, as shown below:

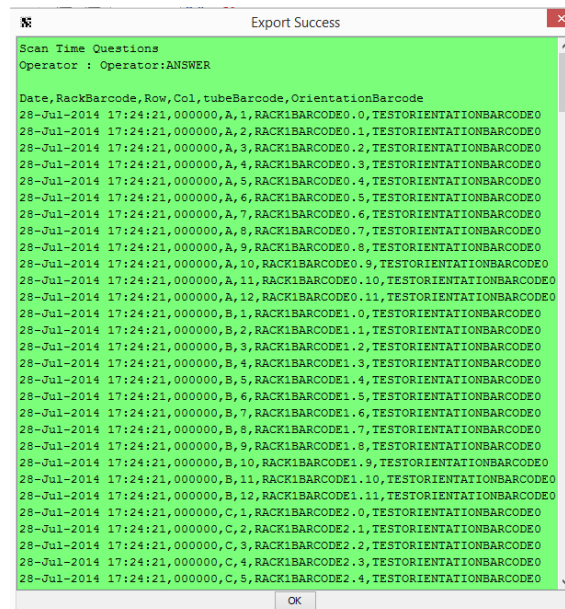


Figure 37: Test Scan Time Export - Results

If the format is not correct an error will be shown; this is detailed below:

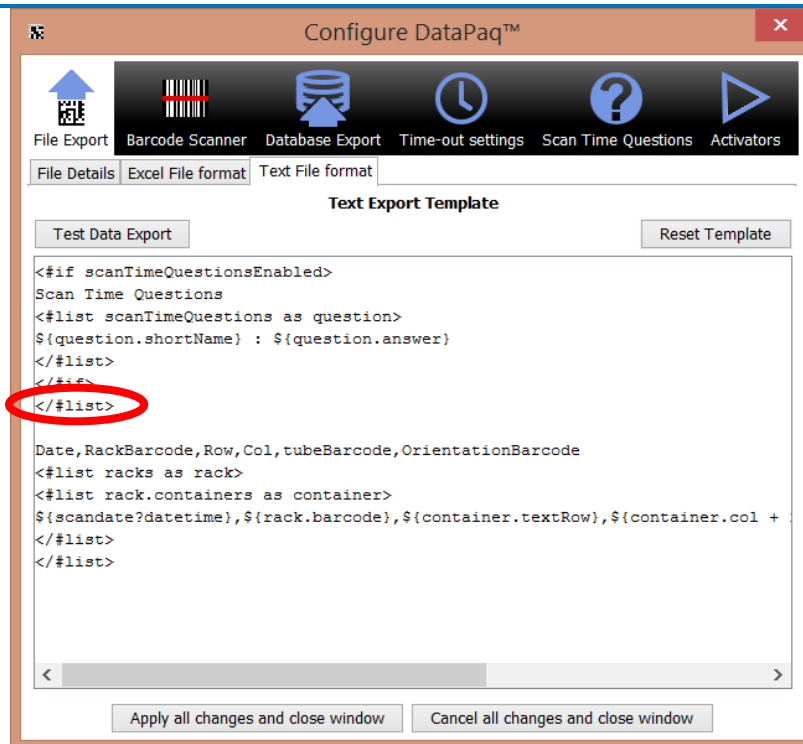


Figure 38: Test Scan Time Export –showing error in format

This has a list close missing to introduce an error; the result is shown below:



Figure 39: Test Scan Time Export – Results showing error in format

Once this configuration is established it can be saved and the text export will now be used.

Finally the Reset Template button will restore the original default text export template; clicking this will remove your existing template.

Linear (1D) Barcode Scanner Configuration

Should a linear barcode scanner be installed, it can be configured via *Configure>Options*:

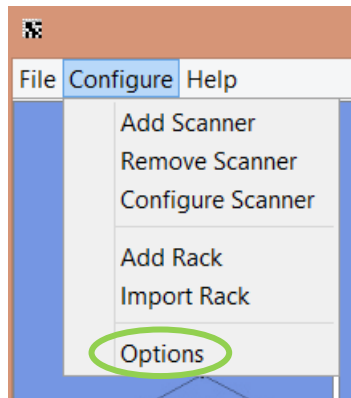


Figure 40: Menu Configuration Selection

The following window will appear:

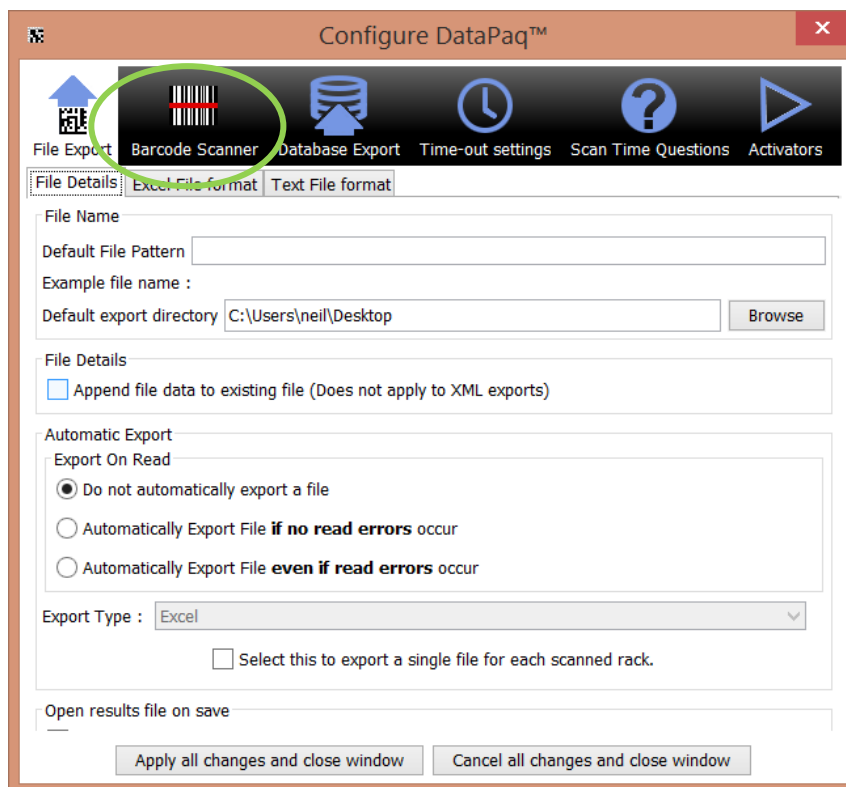


Figure 41: Configuration window

Click on the *Barcode Scanner* icon:

The following configuration options are shown:

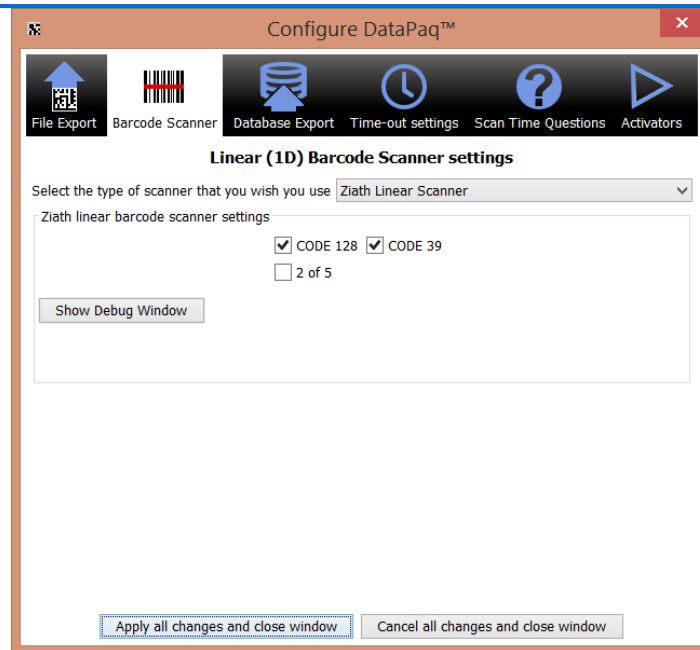


Figure 42: Configure Barcode Dialogue

There are four options:

1) Manual Linear Scanner.

This configures DataPac to prompt for the linear barcode which is typed in by the user manually or scanned in with a handheld scanner.

2) Internal Mirror Scanner

This is used for scanners with an internal mirror to reflect the rack barcode onto the scanning glass. Selecting this option brings up the following dialogue:

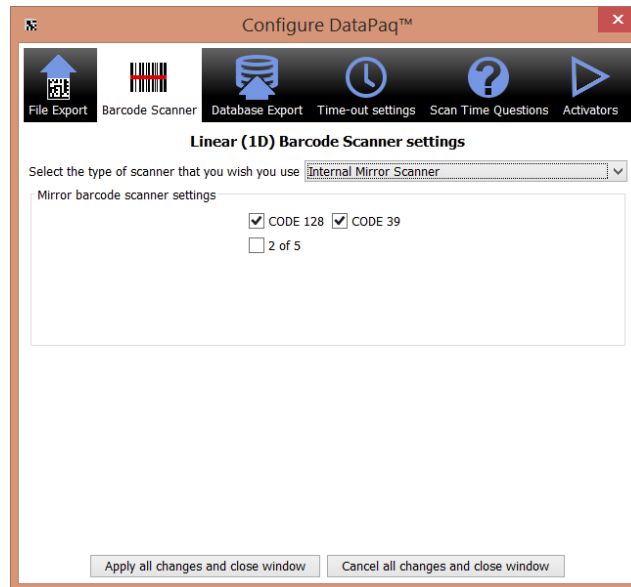


Figure 43: Internal Mirror Scanner

A number of different types of linear barcodes are shown. If only one type of barcode will be used it is recommended to deselect the other types. This is especially important for barcodes without checksums such as Interleaved 2 of 5 as there is an outside chance random noise could be detected as a barcode and without a checksum there is no way of knowing if it is a 'true' barcode or not.

3) Ziath Linear Barcode Scanner

This is a camera based scanner; selecting this option brings up the following dialogue:

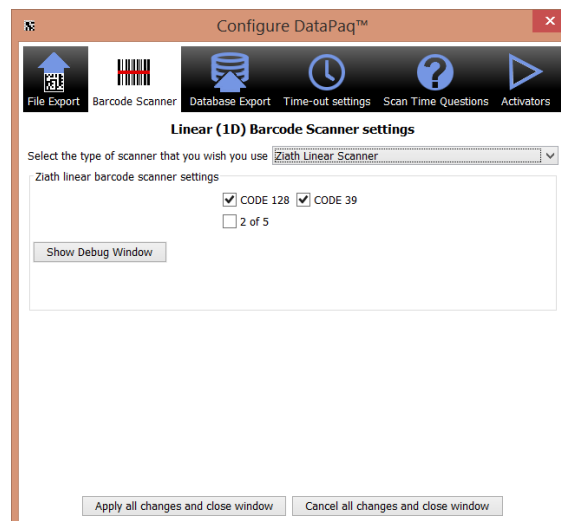


Figure 44: Ziath Linear Barcode Scanner Options

A number of different types of linear barcodes are shown. If only one type of barcode will be used it is recommended to deselect the other types. This is especially important for barcodes without

checksums such as Interleaved 2 of 5 as there is an outside chance random noise could be detected as a barcode and without a checksum there is no way of knowing if it is a 'true' barcode or not. Note that should you wish to view the image of the barcode scanner this is available in the help menu.

The Debug Window will open a separate window showing the results from the linear scanner at varying different exposures typically used to detect a rack barcode. This is intended to be used for trouble shooting if the linear scanner does not perform correctly.

Note that difficult to read barcodes exist on some racks; if you have a difficult to read code 128 barcode it is recommended to deactivate all linear barcode symbologies except for code 128 to reduce misreads.

4) No Linear Scanner

Select this option if there a linear scanner is not being used; all barcodes will be reported as #plate1.

Database Export Configuration

The database interaction feature allows for the results of a read to be inputted directly to a database. The results will be sent to the database system as long as no tubes fail to read.

Configuration

A database connection can be setup either directly to the most common database systems (Oracle, Postgres, MySQL, SQL Server), by an ODBC connection configured on the computer running **DataPac™** or a compatible driver can be uploaded to communicate with another database system (e.g. Derby, SQLite). To access the configuration, go to *Configure>Options* as shown:

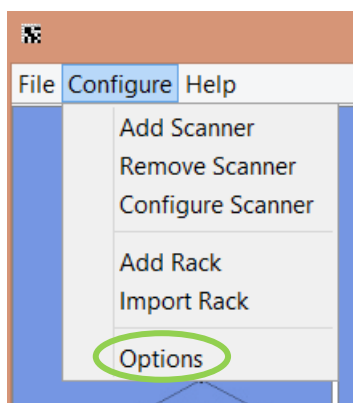


Figure 45: Select Option Menu

After clicking this, the following window will appear:

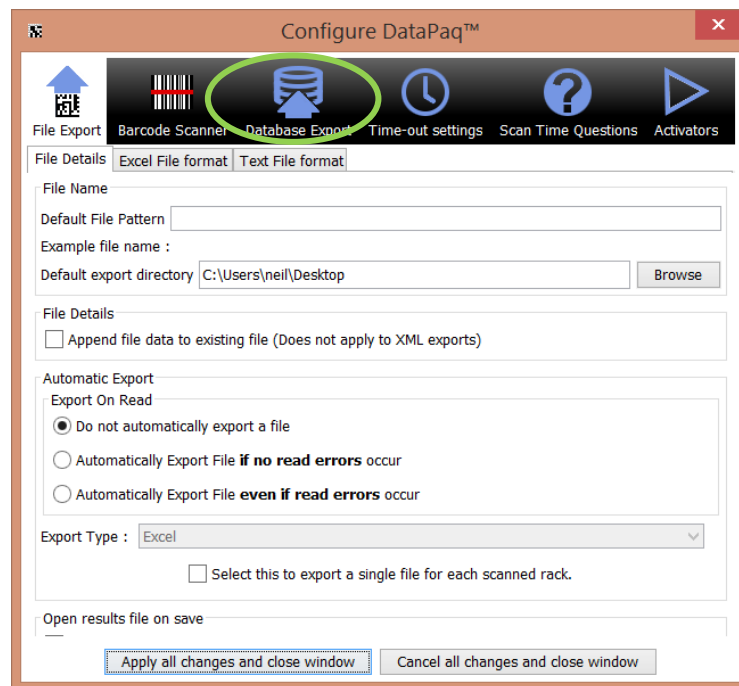


Figure 46: Configuration Front Page

To access the database configuration, click on the *Database Export* icon and the following window will appear:

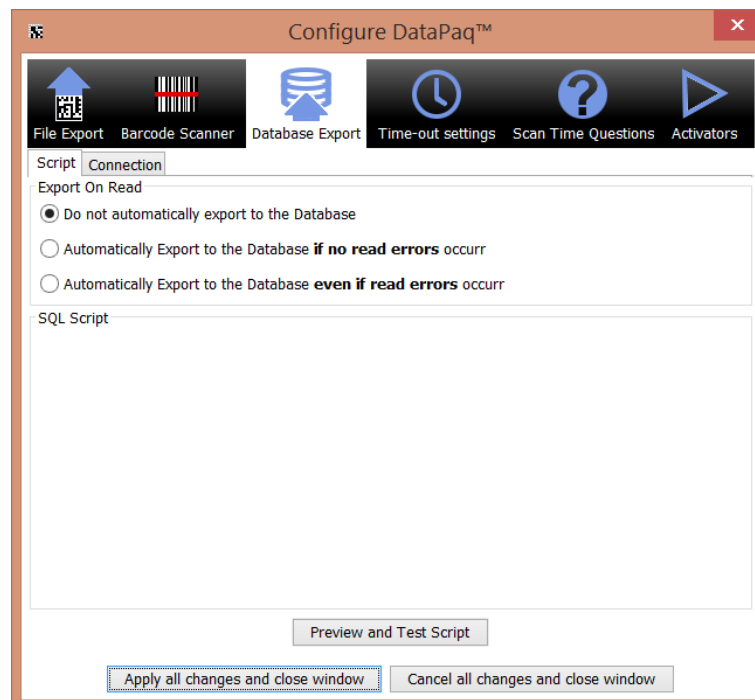


Figure 47: Database Configuration Front Page

To access the configuration, click on the *Connection* tab:

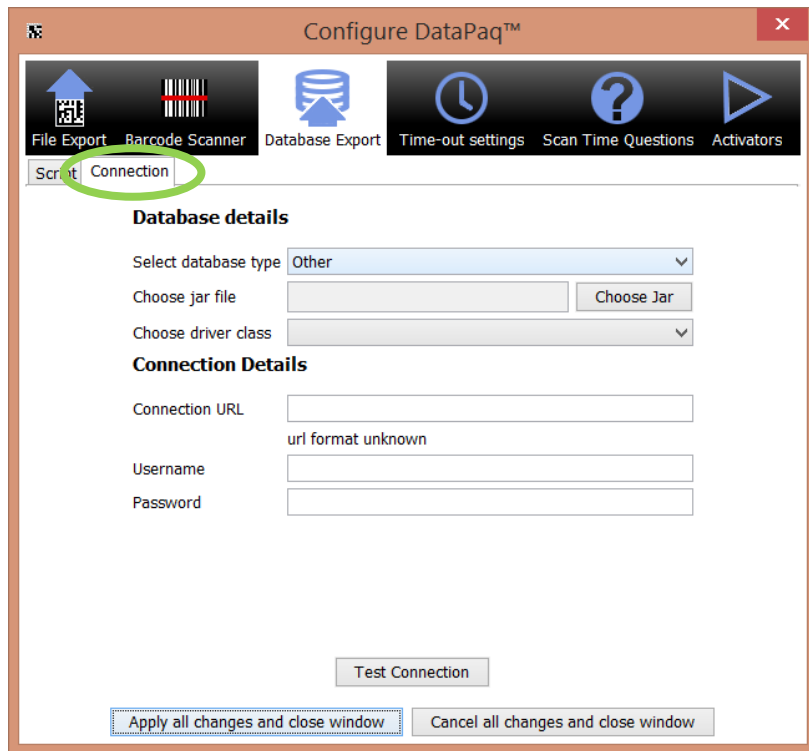


Figure 48: Database Connection Configuration

This window allows for the configuration of the connection to the database. The input elements are described below:

1. *Select Database Type* – in this option the main database systems can be selected:
 - a. HSQL Embedded
 - b. MySQL
 - c. JAVA/ODBC bridge
 - d. Postgres SQL
 - e. Oracle Thin
 - f. Other (see below)
 - g. SQL Server
2. *Choose Jar File* – this is only active if *Other* has been selected in the previous option. In this case locate a JDBC compatible driver for your database which is packaged in a jar file to use. Ensure that this file is locatable in the future (for example, store it on the hard drive of the machine running DataPac™). Should there be difficulty in locating a driver for your database system, contact Ziath at support@ziath.com.
3. *Choose Driver Class* – this is this is only active if *Other* has been selected in the previous option. In this case select a driver class to use. Should there be more than one option,

consult the documentation from the driver manufacturer. Should there be difficulty in locating a driver class for your database system, contact Ziath at support@ziath.com.

4. *Connection URL* – this will differ from system to system as different database systems have differing requirements. A brief summary of the types is detailed below:
 - a. *HSQL Embedded* – [jdbc:hsql:db:<database>](#) – In this case enter the name of the embedded database to use. This is only of use if **DataPaq™** is embedded into a larger Java system.
 - b. *MySQL* – [jdbc:mysql://<server>:<port3306>/<database>](#) – The server is the name or IP address where the database is running and the port is where the MySQL server is listening. The database is the name of the database to be connected to.
 - c. *JAVA/ODBC Bridge* – [jdbc:odbc:<datasource>](#) – The datasource is the name of the ODBC connection which has been setup on the local machine. If possible it is preferable to configure a direct connection but this option is available should it be required.
 - d. *Postgres SQL* – [jdbc:postgresql://<server>:<port5432>/<database>](#) – The server is the name or IP address where the database is running and the port is where the Postgres SQL server is listening. The database is the name of the database to be connected to.
 - e. *Oracle Thin* – [jdbc:oracle:thin:@<server>:<port1521>:<sid>](#) – The server is the name or IP address where the database is running and the port is where the Postgres SQL server is listening.
 - f. *Other* – This is detailed above.
 - g. *SQL Server* –
[jdbc:jtds:sqlserver://<server>:<port1433>;DatabaseName=<database>](#) – The server is the name or IP address where the database is running and the port is where the MySQL server is listening. The database is the name of the database to be connected to. Note that this is not the *default* Microsoft server but an alternative Open Source version – this is due to licensing restrictions from Microsoft.
5. *Username* – This is the username to use to connect to the database
6. *Password* – This is the password to use to connect to the database; note that it is stored on the hard drive in a non-obvious format but still in a format which, with determination, can be read by a third party.

The *Test Connection* button will use the above properties and attempt to connect to the database in question. If the connection is successful the following dialogue will appear:

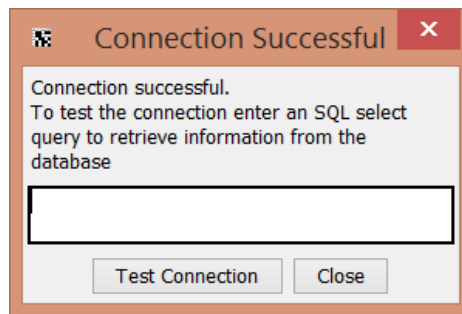


Figure 49: Successful Connection Dialogue [1]

From here some SQL can be entered which will be executed against the database. The results of the call will be displayed in a separate dialogue:

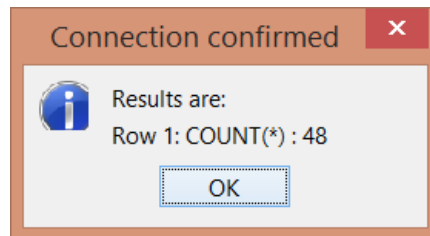


Figure 50: Successful Connection Dialogue [2]

Database Script

To access the configuration, go to *Configure>Options* as shown:

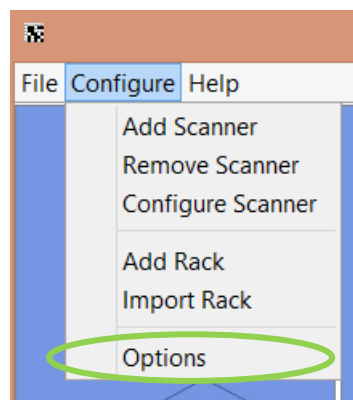


Figure 51: Option Menu Selection

After clicking this, the following window will appear:

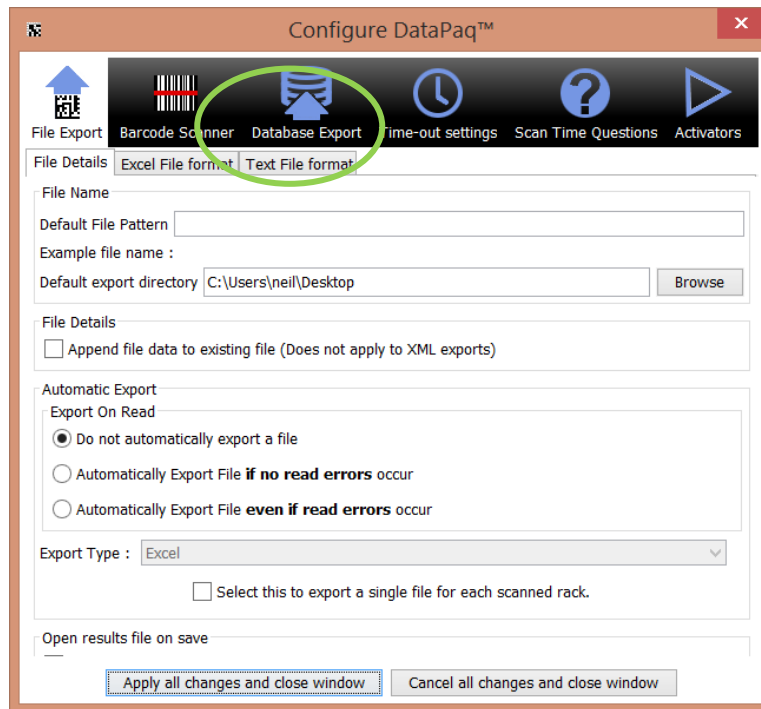


Figure 52: Configuration Front Page

To access the database configuration, click on the *Database Export* icon:

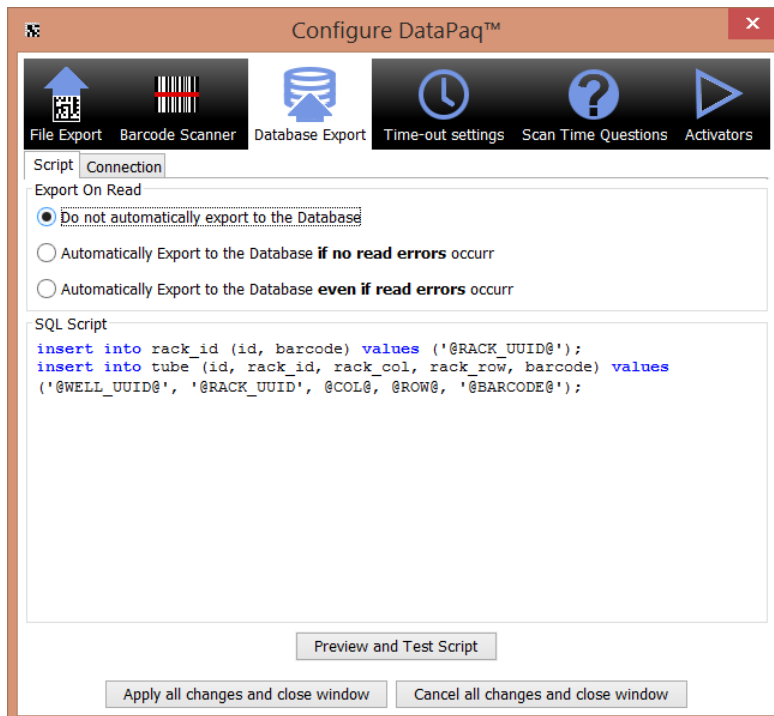


Figure 53 : Database Connection Script Editor

The window above shows a sample script. A script defines the SQL statements which will be executed

after a rack has been scanned. Variables can be used to represent a value which is enclosed between two "at" symbols: @. The available variables are shown below:

RACK_UUID – this is a unique id which is generated for every rack that is scanned.

WELL_UUID - this is a unique id which is generated for every tube that is scanned.

LINEAR – this is the barcode of the scanned rack.

ORIENTATION - this is the 2D barcode on the underside of the rack

BARCODE – this is the barcode of the scanned tube.

COL – this is the column of the scanned tube.

ROW – this is the row of the scanned tube.

NUM_ROWS – the number of rows in the rack

NUM_COLS – the number of columns in the rack

For each well a query with the available variables will be executed; however, if a query would be exactly repeated it is not executed twice. An example script follows:

```
insert into rack (id, barcode) values ('@RACK_UUID@', '@LINEAR@');
```

```
insert into tube (id, rack_id, rack_col, rack_row, barcode)
```

```
values ('@WELL_UUID@', '@RACK_UUID@', @COL@, @ROW@, '@BARCODE@');
```

This would generate one SQL statement (96 identical copies of the same statement mean that the statement would only be executed once) to insert the rack and (assuming a 96 tuberack) 96 SQL statements to insert the well data.

Execution

For testing purposes, *Preview and Test Script* button, on the script interface, can be clicked. This will display the exact SQL statements which will be executed as follows:

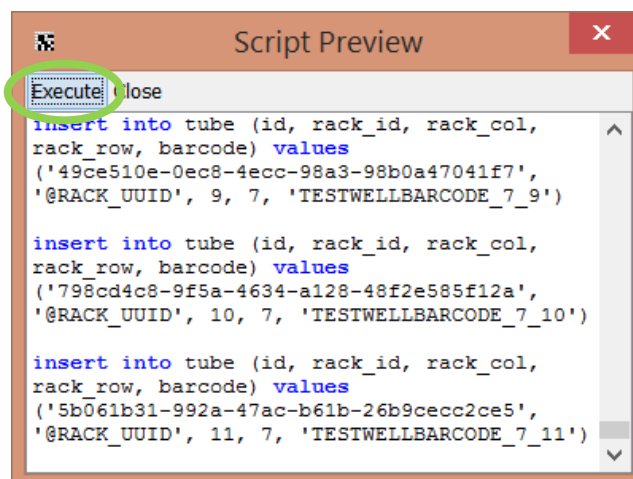


Figure 54: Script Preview

If the *Execute* button at the top left of the window is clicked, the SQL will be executed against the host database. The data which is loaded in will have the barcodes beginning with TEST so they can be identified and purged from the database after the test.

For operation, the system can be configured to automatically execute when a rack is scanned as long as no read failures occur by clicking the *Automatically Export* checkbox on the script entry dialogue. The available options are below:

- *Do not automatically export to the Database* – the export will not happen under any circumstances
- *Automatically export if no read errors occur* – only export if every well is either read or marked as empty
- *Automatically export even if read errors occur* – always export, even if a tube is not read correctly

All the data which is uploaded will be in one single transaction. Therefore, if there is a problem with the update the entire update will be cancelled – avoiding part racks from being uploaded.

Example

We shall take an example of a 96tuberack as follows:

Rack Barcode :plate_pdev

Well barcodes are from WELLBARCODE_0_0 to WELLBARCODE_7_11

Using the script of:

```
insert into rack (id, barcode) values ('@RACK_UUID@', '@LINEAR@');
```

```
insert into tube (id, rack_id, rack_col, rack_row, barcode)
```

```
values ('@WELL_UUID@', '@RACK_UUID@', @COL@, @ROW@, '@BARCODE@');
```

We would achieve the following sql statements:

```
insert into rack (id, barcode) values ('62d0a1c2-27e7-43d3-bf4a-3c0ad6bb7b11', 'plate_pdev')
insert into tube (id, rack_id, rack_col, rack_row, barcode)
values ('f9c6cfee-803a-403d-aee4-d8b57b03844e', '62d0a1c2-27e7-43d3-bf4a-3c0ad6bb7b11', 0, 0,
'WELLBARCODE_0_0')
insert into tube (id, rack_id, rack_col, rack_row, barcode)
values ('b468147c-c0c2-4e00-ad31-0c50df4b976e', '62d0a1c2-27e7-43d3-bf4a-3c0ad6bb7b11', 1, 0,
'WELLBARCODE_0_1')
...
insert into tube (id, rack_id, rack_col, rack_row, barcode)
values ('e10855a3-af8f-4c28-94f4-7bf035ada715', '62d0a1c2-27e7-43d3-bf4a-3c0ad6bb7b11', 11, 7,
'WELLBARCODE_7_11')
```

Time-Out Settings

Time-Out Settings allows configuration on how long the scanner will attempt to re-scan should there be some read-fails. Failure to read the barcodes is usually caused by damaged barcodes or when the scanner is being used in areas of high light. To configure the settings go to *Configure > Options*.

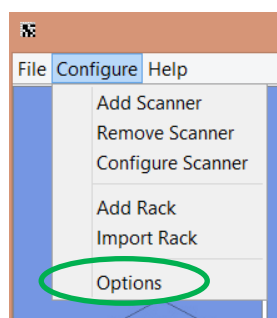


Figure 55: Select options menu

The following screen below will appear:

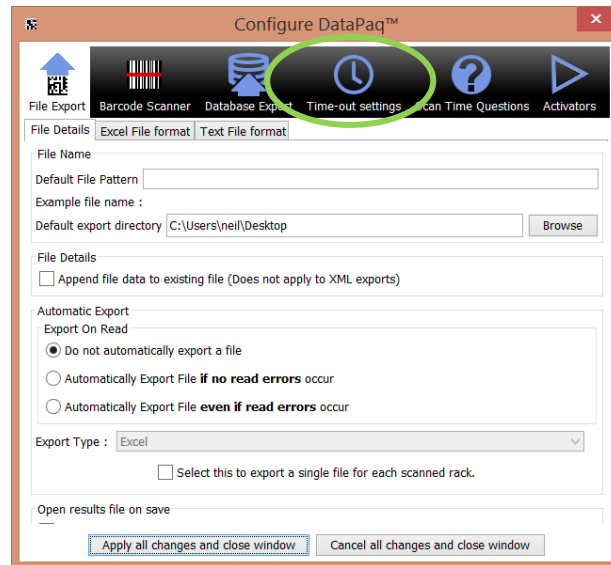


Figure 56: Configure dialogue

Select the Time-Out Settings option and the following window will appear:

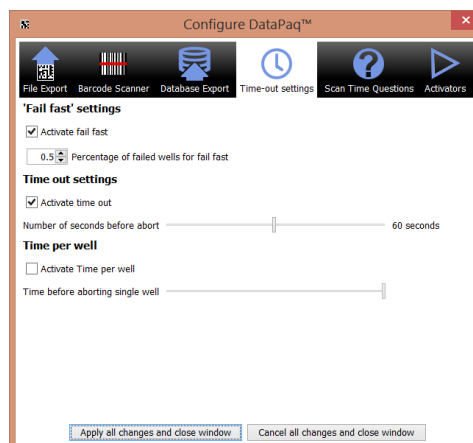


Figure 57: Time-Out Settings

The settings have three different options:

1. "Fail fast": The percentage of tubes that have failed to scan before the scanner stops; the percentage is taken as a fraction between 0 and 1.
2. Time out settings: The number of seconds the scanner will wait without having completed the scan before aborting.
3. Time per well: this is how long the scanner will attempt to decode a single well; note that this needs to take into account the speed of the computer running DataPac and that you also need to take into account other tasks the computer may be doing such as a virus checker.

Scan Time Questions Configuration

The *Scan Time Questions* configuration allows the system to prompt the user to input a series of defined questions to the user scanning a rack. To configure the questions go to *Configure > Options*, as shown in figure 48.

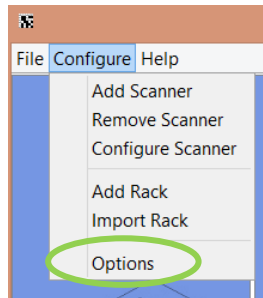


Figure 58: Select Options Menu

The following screen below will appear:

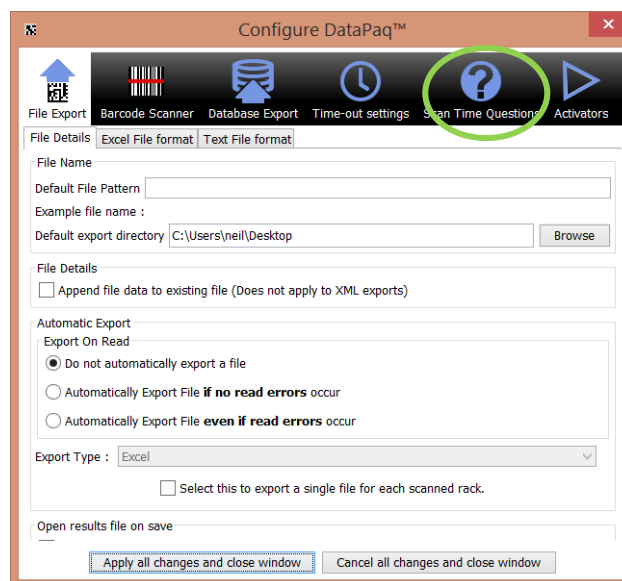


Figure 59: Configure Dialogue

Select the 'Scan Time Questions' icon and the following screen will appear.

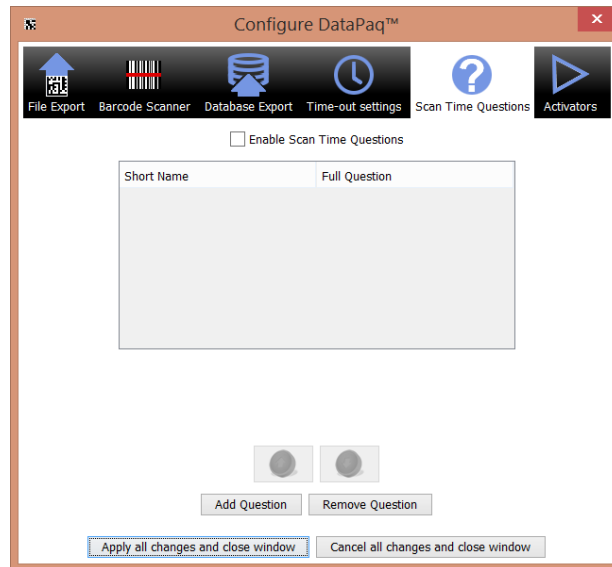


Figure 60: Scan Time Questions Dialogue

A Scan Time Question has three sections

- **Short Name** - a brief identifier which is used to categorise the answer
- **Full Question** - the text of the question which is displayed to the user at runtime.
- **Answer** – the answer given by the user when the rack is scanned

The user interface features are detailed below:

- **Edit Question** – to change the short name or the Full question, double click the text to be changed, edit the text and press return
- **Add Question** – this adds a question to the bottom of the list of questions
- **Remove Question** – to remove a question, click the row detailing the question to delete. Click 'Remove Question' and the question will be removed.
- **Change Question Order** – click the row detailing the question to delete. To adjust the order which the question appears in click the up and down arrows to move the question up and down in the order.
- **Enable Scan Time Questions** – select the check box to ensure the questions are asked when scanned

Activator Configuration

The activator allows a rack to be automatically scanned when a rack is placed on the scanner. This works with the Ziath Linear Reader attached to the system and detects the linear barcode on the side of the rack. To access the Activator Configuration, go to Configure > Options as shown below:

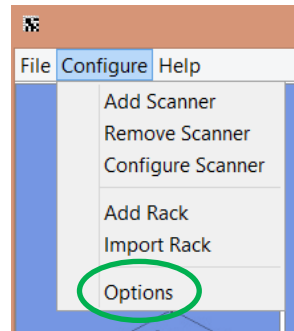


Figure 61: Accessing Options from the Configure menu

The following window appears:

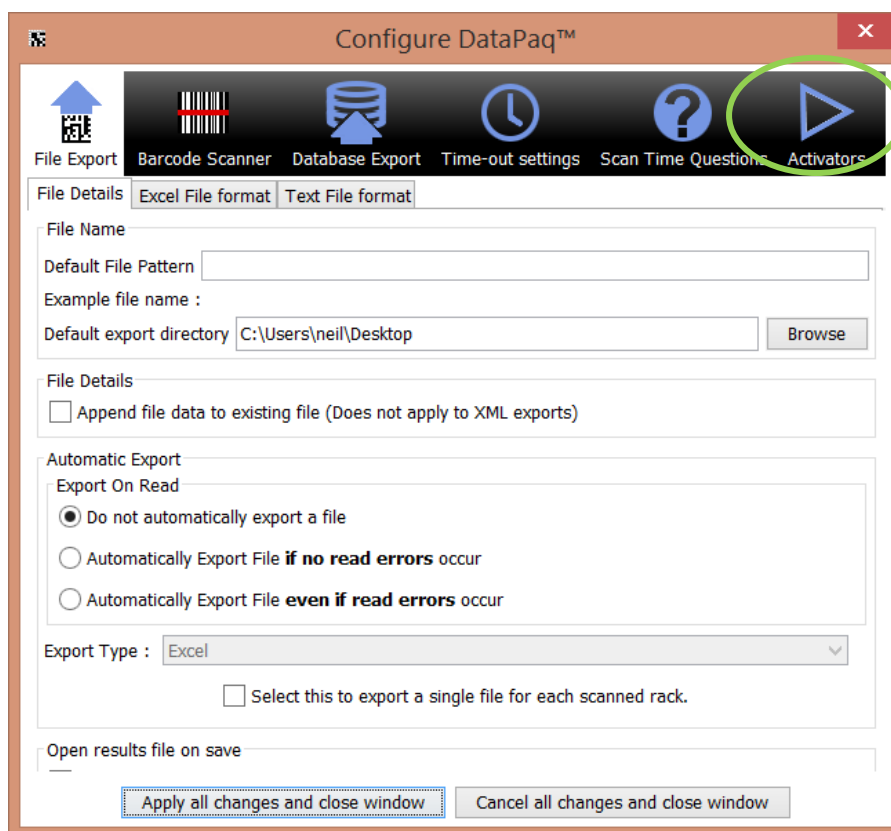


Figure 62: Configure Dialogue

Click on the icon “Activators”. When the Ziath Linear Reader, attached to the system, detects the linear barcode on the side of the rack, the rack will automatically be scanned as shown below:

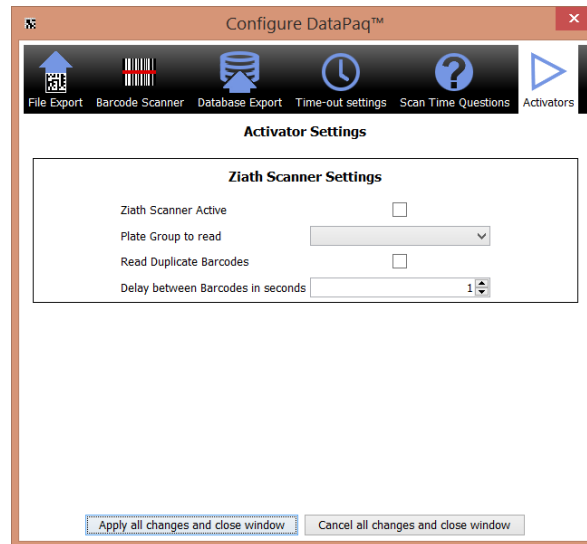


Figure 63: Activator Options Configuration

The available options are:

- Ziath Scanner Active – this turns on the Activator
- Plate Group to Read – the scan to execute when the rack is detected
- Read Duplicate Barcodes – if the same barcode on a rack will be read twice in a row
- Delay between barcodes – the gap in between reads for a rack to be automatically scanned by the Activator when reading the same rack barcode twice

Other Settings

Go to *Configure > Options* menu as shown below:

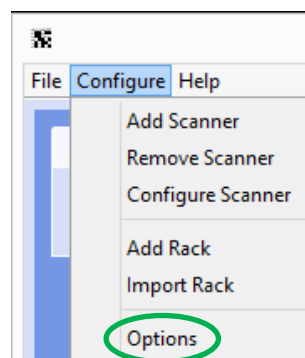


Figure 64: Configure Menu

The following window will appear:

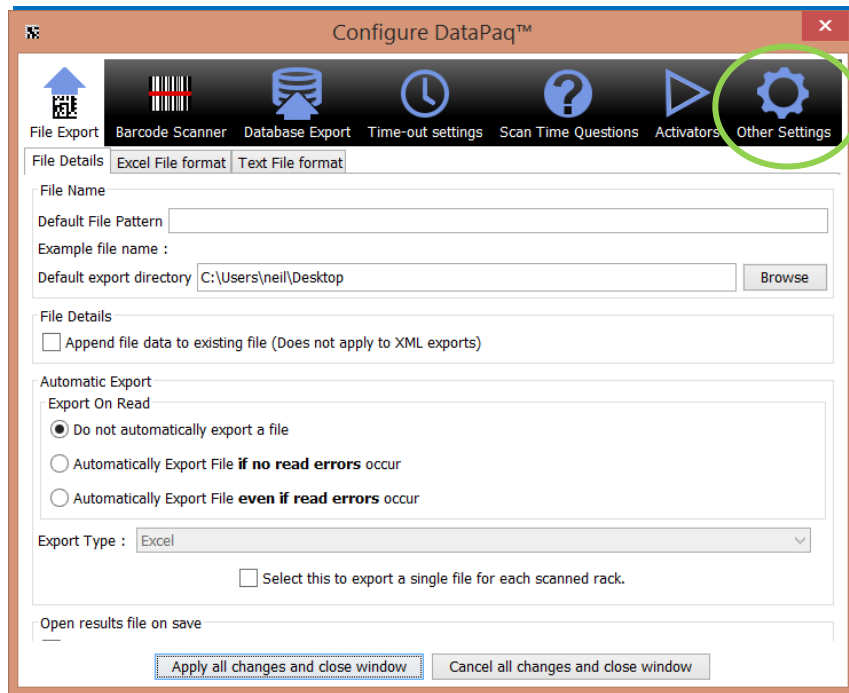


Figure 65: Front page of Options Menu

The following window will appear:

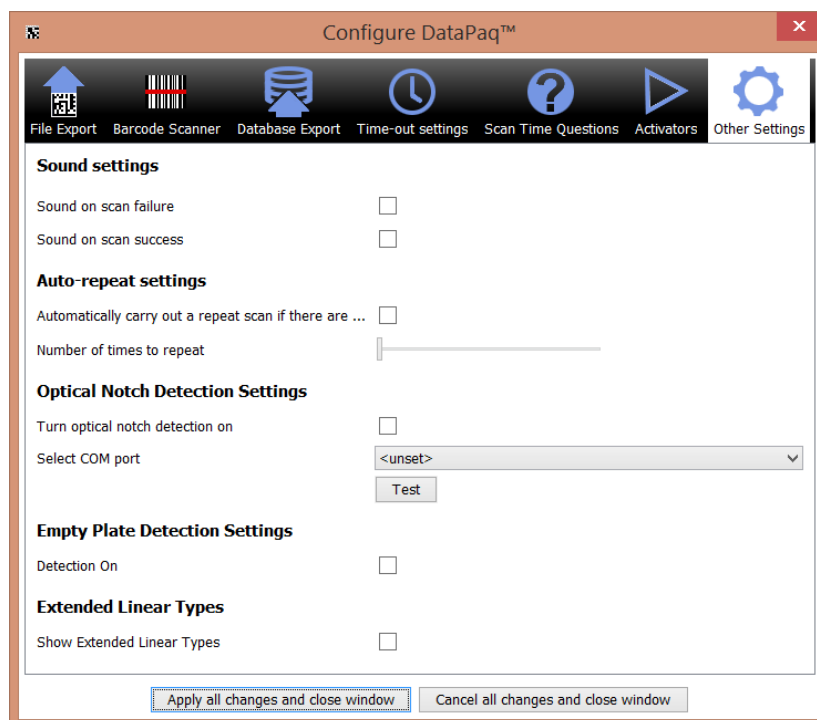


Figure 66: Other Settings Configuration

1. Sound on scan: this will play two different sound if the rack scans successfully or contains a well that has failed.
2. Auto repeat: Due to external factors; a tube may sometimes not decode correctly but can be

decoded with another scan. Therefore if DataPaq™ scans a tube which is not detected it can be configured to rescan the rack a number of times to attempt to decode the tube again. To activate Auto-Repeat click the check box and then select the number of times the scanner will repeat after a tube has failed to read. This can be useful if the scanner is knocked halfway through a read.

3. Optical notch detection: Many rack makes and models have a small cutout in the lower side used to aid in notch detection. The Express can be fitted with an optical sensor that detects this notch to aid in orientation setup; this feature is enabled in these settings.
4. Empty plate detection: DataPaq has an adaptive mechanism to detect locations without a tube in them. If the rack is totally empty this will be fooled; if you wish to scan totally empty racks select this option. Note that it will slow the scan down by a few hundred milliseconds.
5. Extended Linear Types: There are three other rarely used linear barcode types available to be scanned; these are EAN8, EAN13 and CODABAR. To be able to read these select this item; accept the changes and then reopen the dialog

Dev{ }

Manually widen the dialog and using the dialog below:

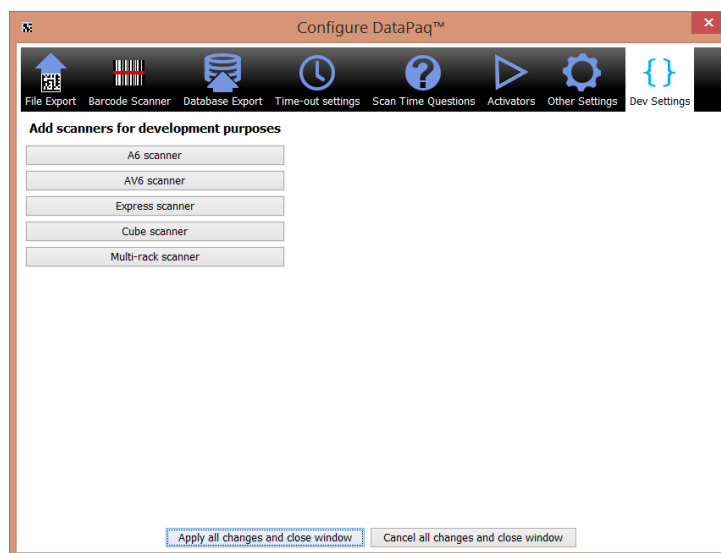


Figure 67: Dev{ } Dialog

The user can add in scanners that are not plugged into the computer. This is only needed for testing purposes and should not be used unless you are setting up DataPaq for integration.

DataPaq™ Operation

DataPaq™ is now ready to use. Simply place the rack or racks in the scanner and click the rack image to read the rack.

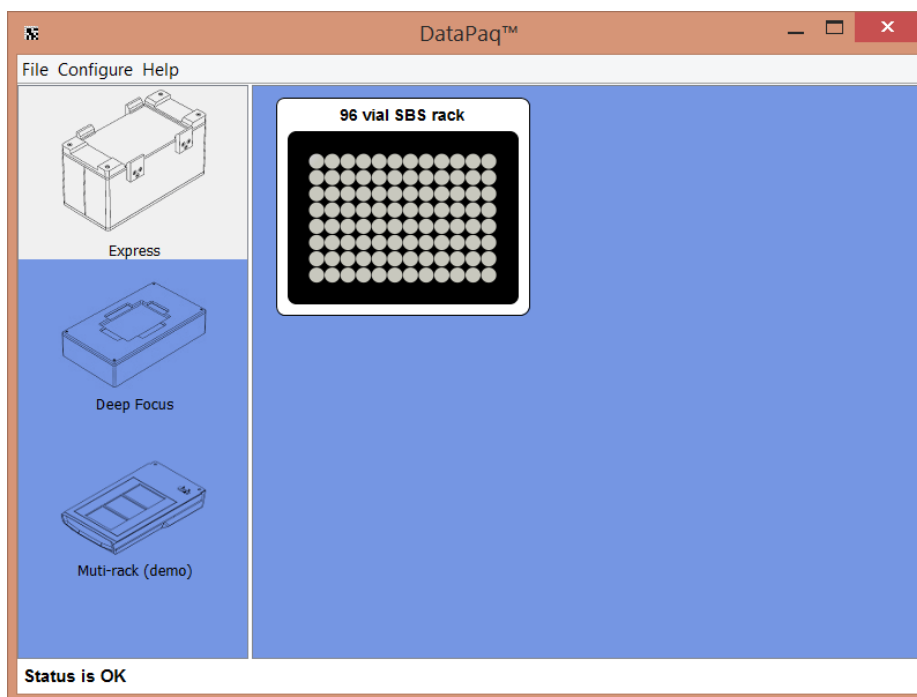


Figure 68: Main Operation Dialogue

If a linear barcode scanner has been installed, the barcode scanner will attempt to read the rack barcode. If it fails to do this, it will prompt for a rack barcode.

If the scan time questions have been enabled a dialogue prompting the questions to answer will be shown as in the example below:

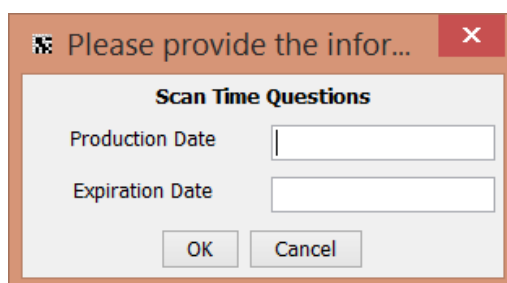


Figure 69: Scan Time Questions Dialogue

Answer the questions and click **OK** (or press enter in the last answer box)

While scanning, **DataPaq™** will attempt to read every well; however, if the rack has not been placed on the scanner correctly **DataPaq™** may take some time to read the rack, the precise time is detailed according to the parameters set in the Abort Policy. If this is clearly a human user mistake, the read can be cancelled clicking the *Cancel* button shown in the decoding ticker as shown below:

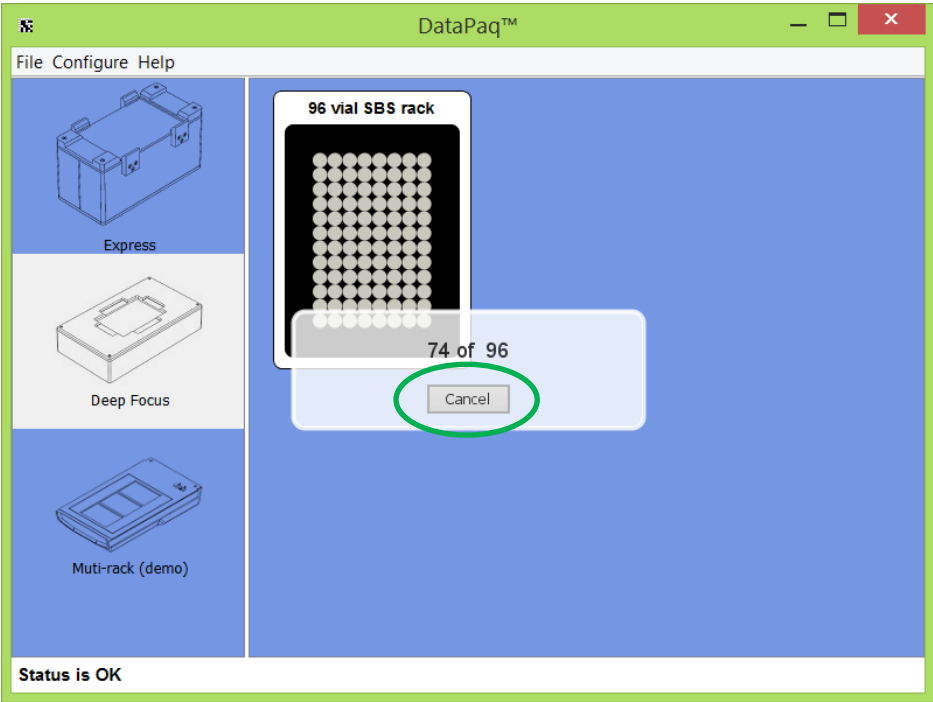


Figure 70: Cancel Dialogue

After scanning, the results of the codes are shown; if a tube is correctly read it will be outlined green; if missing it will be boxed grey; and if present but damaged it will be boxed red.

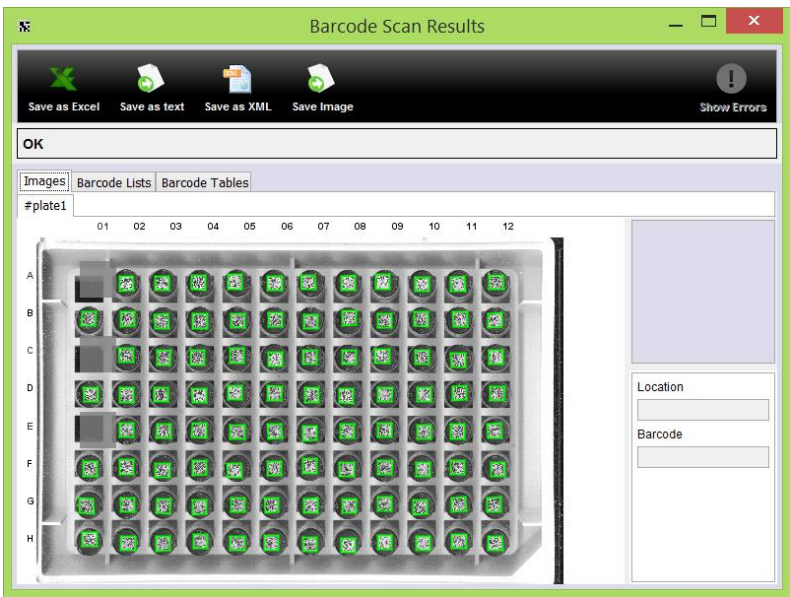


Figure 71: Result Window

Should Scan Time Questions be enabled, the results of the Scan Time Questions will also be displayed as shown below:

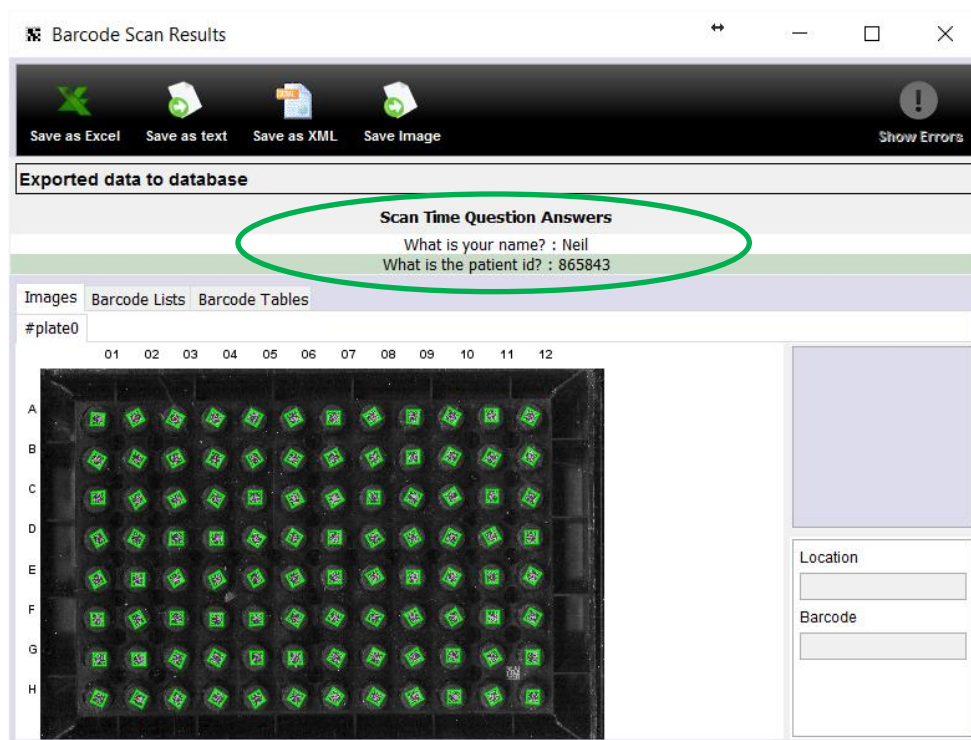


Figure 72: Results window showing Scan Time Questions

Configuring Decoding of Racks with Orientation Barcodes

The orientation barcode will need to be configured prior to scanning a rack. Right click the image of rack, rather than left clicking. This menu will appear:

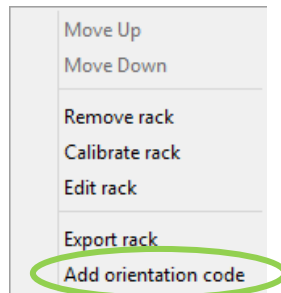


Figure 73: Orientation Rack Dialogue Menu

Click on *Add orientation code* and the scan will start. A new window will open showing where DataPac™ is looking for the orientation code:

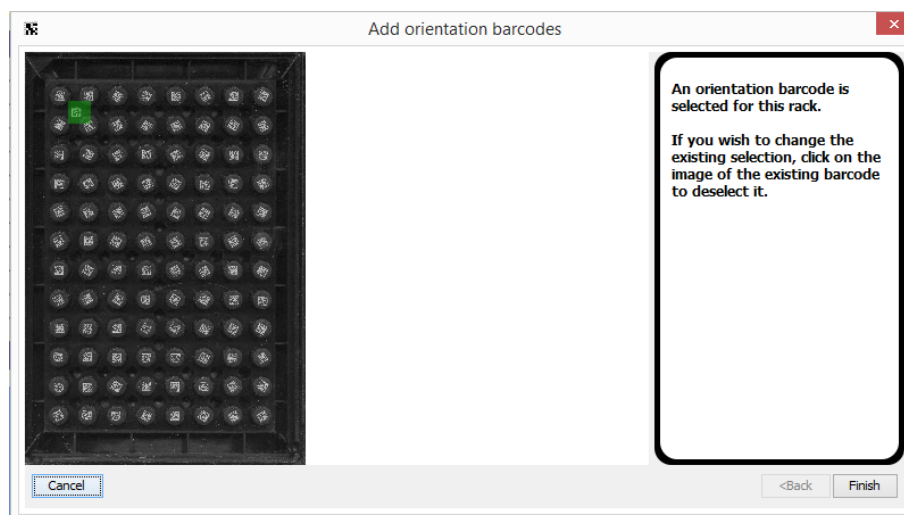


Figure 74: Adding Orientation Barcodes

If the rack you are using has an orientation in a different location, click on the image of the selected location (in green) and a new window will appear:

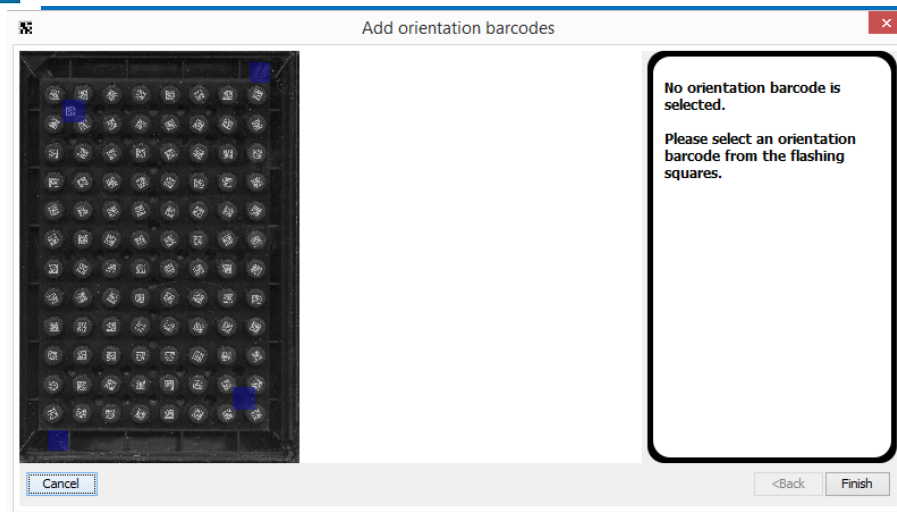


Figure 75: Choosing a different location for the orientation barcode

All the options will be flashing in blue, as above. Click whichever location is right for your rack and click on *Finish*. Even after you have chosen a different location, you are still able to change your mind and go through the process of re-choosing.

Now that the orientation barcode has been configured, the scanner can be used as normal (see “DataPaq™ Operation” for instructions). The orientation barcode will be decoded and exported into the file.

Error in Reading Orientation Barcode

If DataPaq™ cannot read the orientation barcode, once the scan has completed, this window will appear:

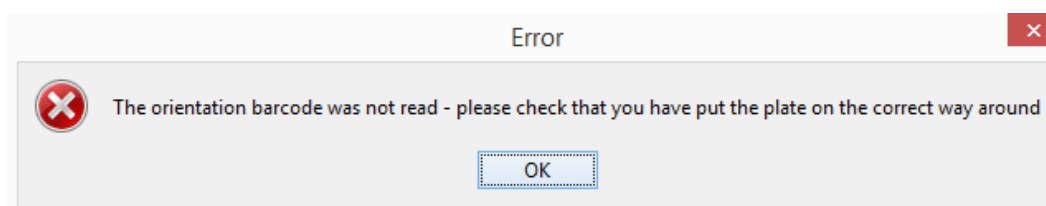


Figure 76: Orientation Barcode Error Message

The scan result will show a red “fail” area where DataPaq™ was trying to read the barcode.

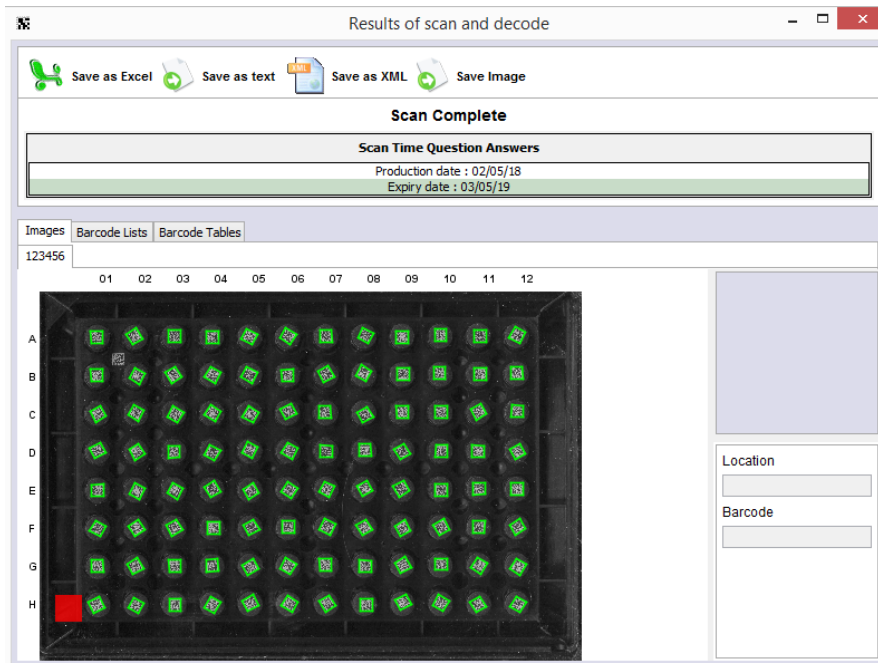


Figure 77: The red error mark shows where DataPaq™ was trying to read the code

If this happens, check the rack being used and that it is not 'back to front' on the scanner.

Removing Orientation Barcode

If you wish to remove the orientation barcode simply right click on the plate icon and select remove orientation barcode from the pop up menu.

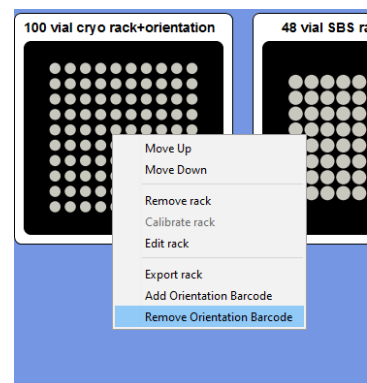


Figure 78: Remove Orientation Barcode

Export Formats

There are three export formats that can be selected: Excel, Text and XML.

Excel

The Excel file that is generated is a 'true' Excel file (rather than a csv file). The format of this is fixed so as to ensure reproducibility between DataPaq™ versions. The header is coloured in red and the data is in rows beneath as shown here:

	A	B	C	D	E	F
1	Scan Time	Rack Barcode	Orientation Barcode	Tube Row	Tube Column	Tube Barcode
2	28/7/2014 19:02	ZIATH D009	none	A		1 0011131613
3	28/7/2014 19:02	ZIATH D009	none	A		2 0011131644
4	28/7/2014 19:02	ZIATH D009	none	A		3 0011131620
5	28/7/2014 19:02	ZIATH D009	none	A		4 0011131678
6	28/7/2014 19:02	ZIATH D009	none	A		5 0011131650
7	28/7/2014 19:02	ZIATH D009	none	A		6 0011131631
8	28/7/2014 19:02	ZIATH D009	none	A		7 0011131641
9	28/7/2014 19:02	ZIATH D009	none	A		8 0011131619
10	28/7/2014 19:02	ZIATH D009	none	A		9 0011131680
11	28/7/2014 19:02	ZIATH D009	none	A		10 0011131675
12	28/7/2014 19:02	ZIATH D009	none	A		11 0011131606
13	28/7/2014 19:02	ZIATH D009	none	A		12 EMPTY
14	28/7/2014 19:02	ZIATH D009	none	B		1 0011131666
15	28/7/2014 19:02	ZIATH D009	none	B		2 0011131602
16	28/7/2014 19:02	ZIATH D009	none	B		3 0011131659
17	28/7/2014 19:02	ZIATH D009	none	B		4 0011131633
18	28/7/2014 19:02	ZIATH D009	none	B		5 0011131639
19	28/7/2014 19:02	ZIATH D009	none	B		6 0011131691

Figure 79: Example Excel Output

Should Scan Time Questions be enabled, the questions and the shortname will be shown as an extra column in the Excel file.

Text

The text output is formatted to an initial default format with the column headers defined for the output and the necessary information detailed as shown below:

```
Date,RackBarcode,Row,Col,TubeBarcode
May 14, 2009 9:46:08 PM,BAR001,A,1,1013589310
May 14, 2009 9:46:08 PM,BAR001,A,2,1013589311
May 14, 2009 9:46:08 PM,BAR001,A,3,1013589312
May 14, 2009 9:46:08 PM,BAR001,A,4,1013589313
May 14, 2009 9:46:08 PM,BAR001,A,5,1013589314
May 14, 2009 9:46:08 PM,BAR001,A,6,1013589315
May 14, 2009 9:46:08 PM,BAR001,A,7,1013589316
May 14, 2009 9:46:08 PM,BAR001,A,8,EMPTY
May 14, 2009 9:46:08 PM,BAR001,A,9,1013589318
May 14, 2009 9:46:08 PM,BAR001,A,10,1013589319
May 14, 2009 9:46:08 PM,BAR001,A,11,1013589320
May 14, 2009 9:46:08 PM,BAR001,A,12,1013589321
May 14, 2009 9:46:08 PM,BAR001,B,1,1013589309
May 14, 2009 9:46:08 PM,BAR001,B,2,1013589308
May 14, 2009 9:46:08 PM,BAR001,B,3,EMPTY
May 14, 2009 9:46:08 PM,BAR001,B,4,1013589306
May 14, 2009 9:46:08 PM,BAR001,B,5,1013589305
May 14, 2009 9:46:08 PM,BAR001,B,6,1013589304
May 14, 2009 9:46:08 PM,BAR001,B,7,1013589303
May 14, 2009 9:46:08 PM,BAR001,B,8,1013589302
May 14, 2009 9:46:08 PM,BAR001,B,9,1013589301
May 14, 2009 9:46:08 PM,BAR001,B,10,1013589300
May 14, 2009 9:46:08 PM,BAR001,B,11,1013589298
May 14, 2009 9:46:08 PM,BAR001,B,12,1013589299
```

Figure 80: Example Text Output

Should *Scan Time Questions* be enabled, the answers to the questions will be displayed at the top of the file. However, should this format need to be changed, see Appendix B for detailed instructions.

XML

This format is used for integration and is a self-describing, fixed format. Should Scan Time Questions be enabled, the full details of the Scan Time Questions will be added as discrete elements at the top of the file. Should further information be required on this format, contact Ziath.

Appendix A

Reserved Words

In data export there are a number of words that are used to signify missing tubes, tubes that could not be read, column headers, etc. For backwards compatibility reasons, these words will not change between versions of **DataPaq™** and are listed below:

Text	Explanation
NOREAD0, NOREAD1, NOREAD2, ... NOREADn	As an output to signify a no read when a 1D Rack Barcode Scanner is attached and the code cannot be read when DataPaq™ is running in headless mode. The number increases from 0 if the scanner has more than one rack.
EMPTY	As an output in the Excel and text output formats in the place of a container barcode to signify that no tube was detected.
DECODE FAILURE	As an output in the Excel and text output formats in the place of a container barcode to signify that a tube was detected but the barcode could not be decoded.
#plate1, #plate2, #plate3, ... #platen	As an output in the Excel, text and headless outputs to signify that no barcode was provided. If more than one rack is scanned and no barcode is entered, the '1' will increment.
DEMO0, DEMO1, DEMO2 ... DEMO n	As an output in the Excel, text and headless mode to simulate demo mode when a 1D Rack Scanner option is installed.
Date	As a header in the default text file output
RackBarcode	As a header in the default text file output
Row	As a header in the default text file output
Col	As a header in the default text file output
tubeBarcode	As a header in the default text file output
Scan Time	As a header in the default Excel file output
Rack Barcode	As a header in the default Excel file output
Tube Row	As a header in the default Excel file output
Tube Col	As a header in the default Excel file output
Tube Barcode	As a header in the default Excel file output

However, these words can be changed. A configuration file called *keywords.xml* is located in the **DataPaq™** installation directory: (on English Windows 7 it is at *C:\ProgramData\Ziath\DataPaq\keywords.xml*). This contains the above words and they can be changed to other values as required.

Appendix B

Customising Export Text Format

While there is a suitable default for exporting it is recognised that an individual organisation may wish to change the export format for a variety of reasons including (for example) interaction with existing systems or for local language compatibility. For this reason the text file format is totally flexible.

The textual export is created using a technology called a *templating language* (specifically Freemarker) – with this technology it is possible to change the headers, the exported data, the format of the columns and rows and even the format of the date (US/EU date formats are one example).

As an illustrative example, the current default text output format is detailed below:

Line Number	Line Text
1	Date,RackBarcode,Row,Col,tubeBarcode
2	<#list racks as rack>
3	<#list rack.containers as container>
4	\${scandate?datetime},\${rack.barcode},\${container.textRow},\${container.col + 1},\${container.barcode}
5	</#list>
6	</#list>

A description, line by line, is shown below:

Line 1 — These are the headers; this text will be written out once for every file that is exported. Whatever is added here will be exported at the top of any exported text file; in addition extra lines can be added into this section if so required.

Line 2 — This will perform the following lines for each of the scanned racks one by one (the large scanner can scan three racks at the same time so in this case it will export all three racks scanned). Note that the ‘as rack’ section tells the outputter to use the name ‘rack’ to refer to the rack currently being outputted.

Line 3 — This processes the following lines for each tube in the specified rack. Note that the ‘as container’ section tells the outputter to use the name ‘container’ to refer to the current rack being outputted.

Line 4 — For each tube this will export the following information:

- i. **`${scandate?datetimescandate}`** – this will export the date in the default configuration as defined on the PC **DataPaq™** is running on. Entering a pattern to specify the date and time format can change the format of this; for example entering **`${scandate?string("yyyy-MM-dd HH:mm:ss")}`** will output *2009-06-08 21:24:44* for the scan date time. For full details see the table in *Date Format Symbols*, in the second part of this appendix.
- iii. **`${rack.barcode}`** – the barcode of the rack the tube is in.
- iv. **`${container.textRow}`** – the row of the tube from A – H (or more if the format is more than 96 wells). Should the row be required in numeric format enter **`${container.row}`**. Note that this will count the first row as zero; to count from 1 enter **`${container.row+1}`**.
- v. **`${container.colmun+1}`** – the column. As above, the counting is from zero; here, '+1' is used for counting from 1.
- vi. **`${container.barcode}`** – the barcode of the container.

Line 5 —instructs the outputter to stop cycling through all the tubes in the rack.

Line 6 —instructs the outputter to stop cycling through all the racks.

In addition to the result file output there is also a template for ScanTimeQuestions output. The default of this is as follows:

Line Number	Line Text
1	<#if scanTimeQuestionsEnabled>
2	Scan Time Questions
3	
4	<#list scanTimeQuestions as question>
5	<code>\${question.shortName} : \${question.answer}</code>
6	</#list>
7	
8	</#if>

The lines are detailed as follows:

Line 1 – scanTimeQuestionsEnabled is set if the enable check box is selected in the configure Scan Time Questions Dialogue. The #if section ties with the /#if on line 8. This ensures that this section will only be executed if the scan time questions have been enabled.

Line 2 – The exports ‘Scan Time Questions’ to the export file

Line 3 - This puts a blank line into the output file

Line 4 – This instructs the system to run through every question in the system. The questions are listed in the same order as they are asked. In the following section each question is called ‘question’

Line 5 – This retrieves each question and lists the short name, followed by a colon and the answer to the question

Line 6 – This tells the system to go back to line 4 until all questions have been processed

Line 7 – This outputs a blank line into the file

Line 8 – This closes the ‘if’ detailed in line 1.

The templating system is an industry standard entitled called *FreeMarker* (<http://freemarker.org>) and has much more capability than described above (it even allows the results to be exported as a webpage if required); visit the *FreeMarker* site for more information. Should any assistance be required for formatting requirements, contact Ziath at support@ziath.com.

Date Format Symbols

Letter	Date or Time Component	Examples
G	Era designator	AD
y	Year	1996; 96
M	Month in year	July; Jul; 07
w	Week in year	27
W	Week in month	2
D	Day in year	189
d	Day in month	10
F	Day of week in month	2
E	Day in week	Tuesday; Tue
a	Am/pm marker	PM
H	Hour in day (0-23)	0
k	Hour in day (1-24)	24
K	Hour in am/pm (0-11)	0
h	Hour in am/pm (1-12)	12
m	Minute in hour	30
s	Second in minute	55
S	Millisecond	978
z	Time zone	Pacific Standard Time; PST; GMT-08:00
Z	Time zone	-0800

Appendix C

Warranty

This document sets out the repair service (the "warranty") offered by Ziath Limited ("Ziath") for the Ziath DataPac™ Scanner (the "product") referenced in this manual. For purposes of this warranty, the "product" refers to both hardware and software and other peripheral items, as supplied by Ziath, but specifically excludes any consumable items.

Ziath provides warranty on the product on the following terms:

1. The terms of this warranty apply to the product as purchased and are for the benefit of the original purchaser only. Ziath makes no express or implied warranty on the product in the event the product is sold on or transferred to any third party.
2. Ziath will repair or replace defective parts and/or equipment within a reasonable time period (up to one year), and within the service levels applicable to original or extended warranties.
3. As part of the warranty offered by Ziath, part of or the entire product may be replaced. In order to take advantage of this service, you will be required to confirm that you have not transferred any rights in the product to a third party. You also agree that Ziath may remove the product from your location in order to effect the repair as necessary, which determination of necessary removal will be made at Ziath's sole discretion. The repair or replacement of the product will not extend the original warranty period selected at the time of purchase.
4. Warranty service will be void in the event unauthorized modifications have been made to the product. This warranty does not cover faults or damage caused by other equipment or persons or by failure to operate and maintain the product in accordance with the instructions set forth in this user manual.
5. The costs of any repair or replacement made within the terms of this warranty will be borne by Ziath.
6. Ziath has no liability or responsibility toward the purchaser of this product other than for repair or replacement of the original product, as specified in this warranty.

Appendix D

CE and RoHS Certificates

Please see the following pages for the CE and RoHS certificates for all devices detailed in this manual:



RoHS

Ziath Ltd, Unit 2a, Solopark, Trading Estate, Station Road,
Pampisford, Cambridge, CB22 3HB

Registered as a limited company in England & Wales

Company number : 05598930

Ziath Ltd, certify with sole responsibility that the following equipment:

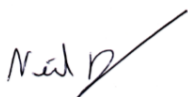
Description : Single Linear Barcode Scanner

Model Number : ZTS-1DR2

adheres to the requirements of Restriction of Hazardous Substances

*Directive (European Directive 2015/863/EU, RoHS) and are considered to be
verified as "RoHS compliant". Levels are beneath the regulated maximums*

Designed, manufactured and distributed by Ziath Ltd.



Neil Benn/ Director



Ziath Ltd, Unit 2a, Solopark, Trading Estate, Station Road,
Pampisford, Cambridge, CB22 3HB

Registered as a limited company in England & Wales

Company number : 05598930

Ziath Ltd, certify with sole responsibility that the following equipment:

Description : Multirack 2D Barcode Scanner

Model Number : ZTS-A4

*adheres to the requirements of 2006/95/EC and 2004/108/EC for low
voltage safety based upon adherence to the following standards:*

EN60950 - 1:2006 A11:2009 + A1:2010 + A12:2011

EN62311:2008

EN55022:2010

EN55024:2010

EN61000 - 3- 2:2006 A2:2009

EN61000 - 3- 3:2008

EN50581:2012

EN50564:2011

EN62301:2005

Designed, manufactured and distributed by Ziath Ltd.

A handwritten signature in black ink, appearing to read 'Neil Benn'.

Neil Benn/ Director

RoHS



Ziath Ltd, Unit 2a, Solopark, Trading Estate, Station Road,
Pampisford, Cambridge, CB22 3HB

Registered as a limited company in England & Wales

Company number : 05598930

Ziath Ltd, certify with sole responsibility that the following equipment:

Description : Multirack 2D Barcode Scanner

Model Number : ZTS-A4

adheres to the requirements of Restriction of Hazardous Substances

Directive (European Directive 2015/863/EU, RoHS) and are considered to be

verified as "RoHS compliant". Levels are beneath the regulated maximums

Designed, manufactured and distributed by Ziath Ltd.

A handwritten signature in black ink, appearing to read "Neil Benn", with a long diagonal stroke extending from the end.

Neil Benn/ Director



Ziath Ltd, Unit 2a, Solopark, Trading Estate, Station Road,
Pampisford, Cambridge, CB22 3HB

Registered as a limited company in England & Wales

Company number : 05598930

Ziath Ltd, certify with sole responsibility that the following equipment:

Description : High Speed 2D Barcode Scanner

Model Number : ZTS-A62

*adheres to the requirements of 89/336/EEC for EMC and 73/23/EEC for low
voltage safety based upon adherence to the following standards:*

EN 55022 1998 Class B

EN 55024 1998

EN 61000-4-2 1995+A1: 1998+A2: 2001

EN 61000-4-3: 2002+A1: 2002

IEC 61000-4-4: 1995+A1: 2001+A2: 2001

IEC 61000-4-5: 1995+A1: 2001

IEC 61000-4-6: 1996+A1: 2001

IEC 61000-4-11: 1994+A1: 2000

IEC 61000-3-2 2000

IEC 61000-3-3: 1995+A1: 2001

EN60950

Designed, manufactured and distributed by Ziath Ltd.

A handwritten signature in black ink, appearing to read 'Neil Benn', with a long, sweeping horizontal line extending to the right.

Neil Benn/ Director

RoHS Ziath

Ziath Ltd, Unit 2a, Solopark, Trading Estate, Station Road,
Pampisford, Cambridge, CB22 3HB

Registered as a limited company in England & Wales

Company number : 05598930

Ziath Ltd, certify with sole responsibility that the following equipment:

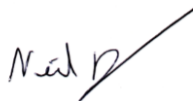
Description : High Speed 2D Barcode Scanner

Model Number : ZTS-A62

adheres to the requirements of Restriction of Hazardous Substances

*Directive (European Directive 2015/863/EU, RoHS) and are considered to be
verified as "RoHS compliant". Levels are beneath the regulated maximums*

Designed, manufactured and distributed by Ziath Ltd.



Neil Benn/ Director



Ziath

Ziath Ltd, Unit 2, Solopark, Trading Estate, Station Road,
Pampisford, Cambridge, CB22 3HB

Registered as a limited company in England & Wales

Ziath Ltd, certify with sole responsibility that the following equipment:

Description : Deep Focus 2D Barcode Scanner Version 2

Model Number : ZTS-AV62

*adheres to the requirements of 89/336/EEC for EMC and 73/23/EEC for low
voltage safety based upon adherence to the following standards:*

EN 55022: 2006+A1:2007

EN 61000-3-2: 2006

EN 61000-3-3: 2008

EN55024: 1998+A1: 2001+A2:2003

IEC 61000-4-2: 2008

IEC 61000-4-3: 2008

IEC 61000-4-4: 2004

IEC 61000-4-6: 2008

IEC 61000-4-8: 2009

IEC 61000-4-11: 2004

Designed, manufactured and distributed by Ziath Ltd.

Neil Benn/ Director

RoHS Ziath

Ziath Ltd, Unit 2a, Solopark, Trading Estate, Station Road,
Pampisford, Cambridge, CB22 3HB

Registered as a limited company in England & Wales

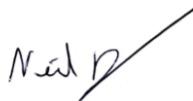
Ziath Ltd, certify with sole responsibility that the following equipment:

Description : Deep Focus 2D Barcode Scanner Version 2

Model Number : ZTS-AV62

*adheres to the requirements of Restriction of Hazardous Substances
Directive (European Directive 2015/863/EU, RoHS) and are considered to be
verified as "RoHS compliant". Levels are beneath the regulated maximums.*

Designed, manufactured and distributed by Ziath Ltd.



Neil Benn/ Director



Ziath Ltd, Unit 2a, Solopark, Trading Estate, Station Road,
Pampisford, Cambridge, CB22 3HB, UK

Registered as a limited company in England & Wales

Ziath Ltd, certify with sole responsibility that the following equipment:

Description : Cube 2D Barcode Scanner

Model Number : ZTS-CUBE

*adheres to the requirements of 2014/30EU for EMC and 2014/35/EU for
low voltage safety based upon adherence to the following standards:*

EN 61326-1:2013 Group 1 Class B

EN 61000-3-2

EN 61000-3-3

EN 55024:2010/ EN 61000-4-2

EN 55024:2010/ EN 61000-4-3

EN55024:2010/ EN 61000-4-4

EN 55024:2010/ EN 61000-4-5

EN55024:2010/ EN 61000-4-6

EN 55024:2010/ EN 61000-4-11

EN 55032: 2012/ AC: 2013

Designed, manufactured and distributed by Ziath Ltd.

A handwritten signature in black ink, appearing to read 'Neil Benn', with a long horizontal line extending to the right.

Neil Benn/ Director

Date : 24th April 2018

Location : Cambridge UK

RoHS Ziath

Ziath Ltd, Unit 2a, Solopark, Trading Estate, Station Road,
Pampisford, Cambridge, CB22 3HB

Registered as a limited company in England & Wales

Company number : 05598930

Ziath Ltd, certify with sole responsibility that the following equipment:

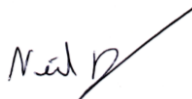
Description : Cube 2D Barcode Scanner

Model Number : ZTS-CUBE

adheres to the requirements of Restriction of Hazardous Substances

*Directive (European Directive 2015/863/EU, RoHS) and are considered to be
verified as "RoHS compliant". Levels are beneath the regulated maximums*

Designed, manufactured and distributed by Ziath Ltd.



Neil Benn/ Director



Ziath Ltd, Unit 2a, Solopark, Trading Estate, Station Road,
Pampisford, Cambridge, CB22 3HB, UK

Registered as a limited company in England & Wales

Ziath Ltd, certify with sole responsibility that the following equipment:

Description : Express 2D Barcode Scanner

Model Number : ZTS-EXP

*adheres to the requirements of 2014/30EU for EMC and 2014/35/EU for
low voltage safety based upon adherence to the following standards:*

EN 61326-1:2013 Group 1 Class B

EN 61000-3-2

EN 61000-3-3

EN 55024:2010/ EN 61000-4-2

EN 55024:2010/ EN 61000-4-3

EN55024:2010/ EN 61000-4-4

EN 55024:2010/ EN 61000-4-5

EN55024:2010/ EN 61000-4-6

EN 55024:2010/ EN 61000-4-11

EN 55032: 2012/ AC: 2013

Designed, manufactured and distributed by Ziath Ltd.

A handwritten signature in black ink, appearing to read 'Neil Benn', with a long, sweeping horizontal stroke extending to the right.

Neil Benn/ Director

RoHS Ziath

Ziath Ltd, Unit 2a, Solopark Trading Estate, Station Road,
Pampisford, Cambridge, CB22 3HB

Registered as a limited company in England & Wales

Company number : 05598930

Ziath Ltd, certify with sole responsibility that the following equipment:

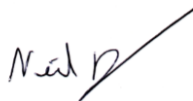
Description : Express 2D Barcode Scanner

Model Number : ZTS-EXP

adheres to the requirements of Restriction of Hazardous Substances

*Directive (European Directive 2015/863/EU, RoHS) and are considered to be
verified as "RoHS compliant". Levels are beneath the regulated maximums.*

Designed, manufactured and distributed by Ziath Ltd.



Neil Benn/ Director



Ziath Ltd, Unit 2a, Solopark, Trading Estate, Station Road,
Pampisford, Cambridge, CB22 3HB, UK

Registered as a limited company in England & Wales

Ziath Ltd, certify with sole responsibility that the following equipment:

Description : Mirage 2D Barcode Scanner

Model Number : ZTS-MIRAGE

*adheres to the requirements of 2014/EU for EMC and 2014/35/EU for low
voltage safety based upon adherence to the following standards:*

EN 61326-1:2013 Group 1 Class B

EN 61000-3-2

EN 61000-3-3

EN 55024:2010/ EN 61000-4-2

EN 55024:2010/ EN 61000-4-3

EN55024:2010/ EN 61000-4-4

EN 55024:2010/ EN 61000-4-5

EN55024:2010/ EN 61000-4-6

EN 55024:2010/ EN 61000-4-11

EN 55032: 2012/ AC: 2013

Designed, manufactured and distributed by Ziath Ltd.

A handwritten signature in black ink, appearing to read 'Neil Benn', with a long, sweeping horizontal line extending to the right.

Neil Benn/ Director

RoHS Ziath

Ziath Ltd, Unit 2a, Solopark Trading Estate, Station Road,
Pampisford, Cambridge, CB22 3HB

Registered as a limited company in England & Wales

Company number : 05598930

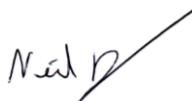
Ziath Ltd, certify with sole responsibility that the following equipment:

Description : Mirage 2D Barcode Scanner

Model Number : ZTS-MIRAGE

*adheres to the requirements of Restriction of Hazardous Substances
Directive (European Directive 2015/863/EU, RoHS) and are considered to be
verified as "RoHS compliant". Levels are beneath the regulated maximums.*

Designed, manufactured and distributed by Ziath Ltd.



Neil Benn/ Director

This page left intentionally blank.

