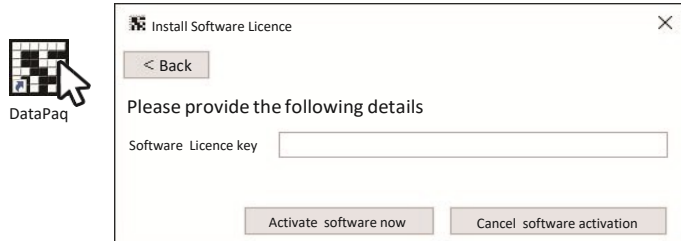


# DataPaq™ High Speed Quick Start Guide

Check that your High Speed is installed and connected (see High Speed installation guide)

## 1. Activate Software

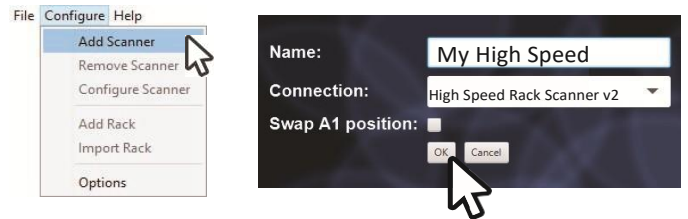
If your computer has an internet connection, please run the DataPaq™ software. Enter your Software Licence Key to activate DataPaq™



If your computer does not have an internet connection, please see 'Manual software activation' in the DataPaq™ user guide

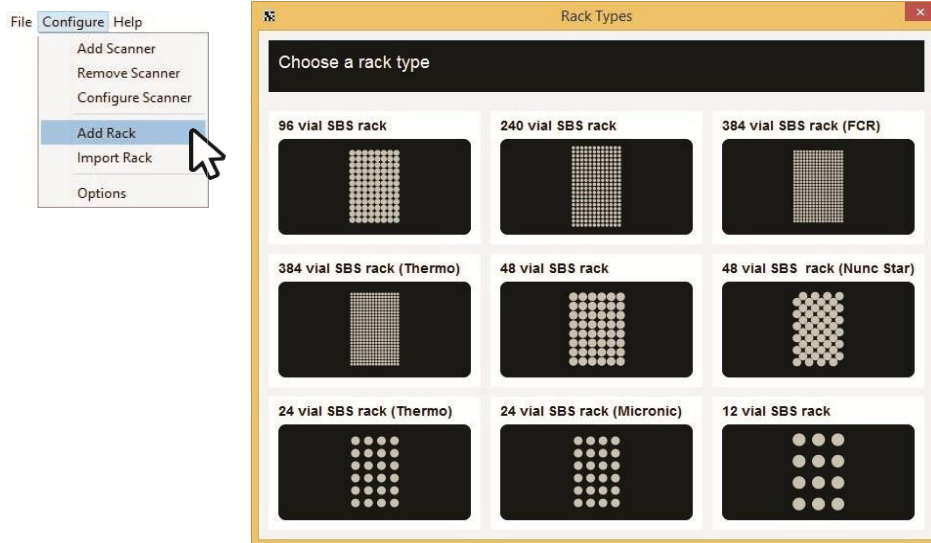
## 2. Add Scanner

Click the Configure menu and select Add Scanner. Enter the Name you would like for your High Speed and click OK

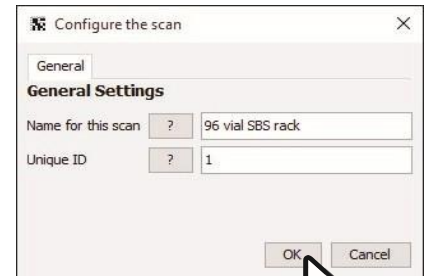


## 3. Add Rack

Click the Configure menu and select Add Rack. Select the type of rack you wish to scan



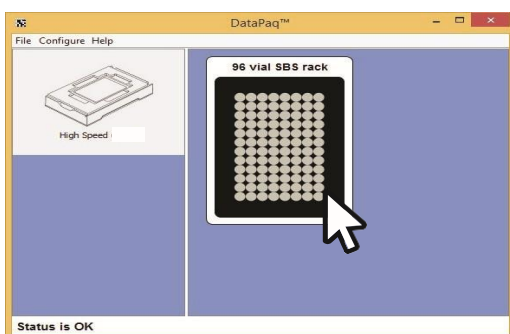
Change the default name of the rack. Unique ID is used for Remote Interaction. Click OK



Your High Speed is now ready to use

## 4. Scanning racks

Place your rack on the High Speed and click the rack image. Your rack is scanned and the barcodes decoded.



## 5. Help and Support

If you have experienced any problems, please refer to the DataPaq™ User Guide, sections: Installation, Registration and configuration

Alternatively, contact support at Ziath

support@ziath.com  
+44(0)1223855021

Ziath Ltd  
www.ziath.com

Ziath Ltd  
Unit 2A Solopark Trading Estate, Station Road  
Pampisford, Cambridge, CB22 3HB