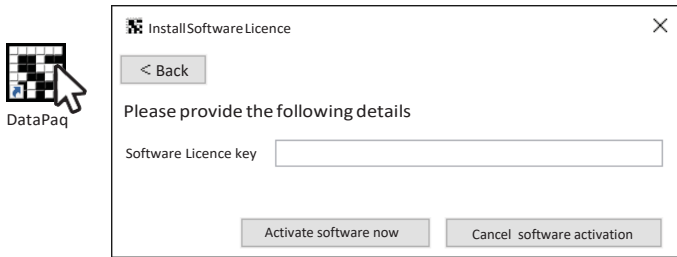


# DataPaq™ Multi-Rack Quick Start Guide

Install the driver from the CD or download from <http://www.ziath.com/index.php/downloads/software-manuals>  
 Choose the driver for your scanner and operating system

## 1. Activate Software

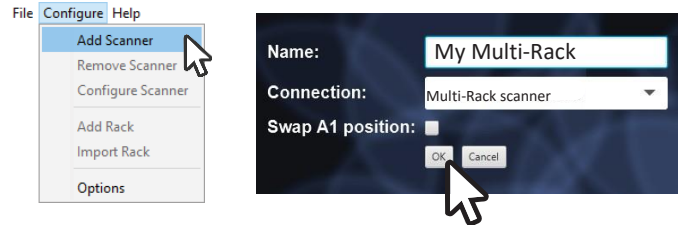
If your computer has an internet connection, please run the DataPaq™ software. Enter your Software Licence Key to activate DataPaq™



If your computer does not have an internet connection, please see 'Manual software activation' in the DataPaq™ user guide

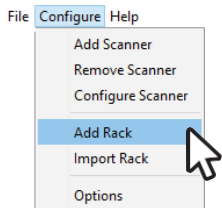
## 2. Add Scanner

Click the Configure menu and select Add Scanner. Enter the Name you would like for your Multirack and click OK

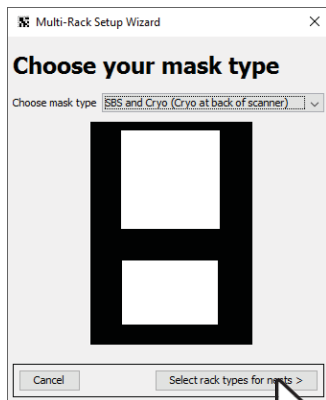


## 3. Add Rack

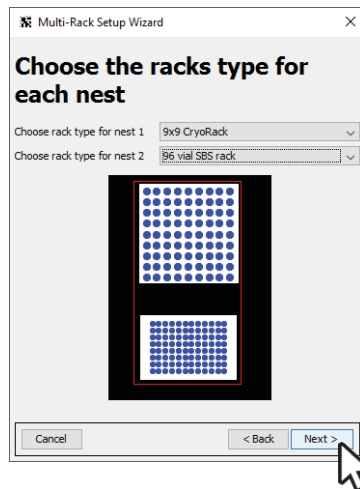
Click the Configure menu and select Add Rack. Multi-Rack scanner has various Mask and Rack options. First choose your Mask



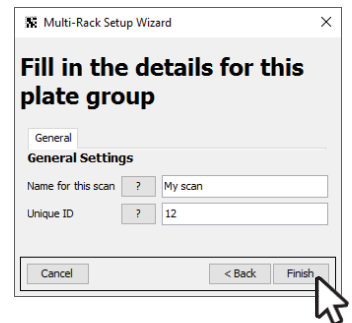
Choose your Mask



Choose your rack types



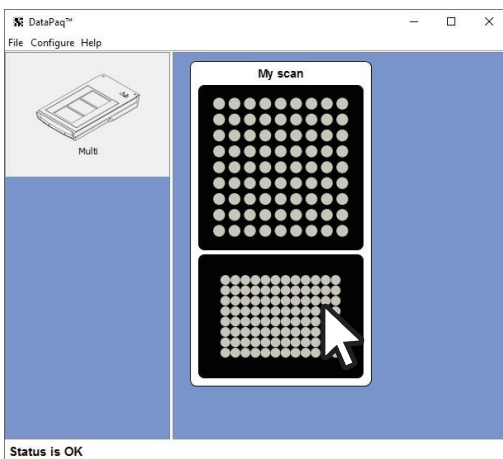
Choose the name of this scan. Unique ID is used for Remote Interaction. Click Finish



Your scanner is now ready to use

## 4. Scanning racks

Place your racks on the scanner and click the Mask image. Your racks are scanned and the barcodes decoded



## 5. Help and Support

If you have experienced any problems, please refer to the DataPaq™ User Guide, sections: Installation, Registration and configuration

Alternatively, contact support at Ziath

support@ziath.com  
 +441223855021

Ziath Ltd  
 www.ziath.com

Ziath Ltd  
 Unit 2A Solopark Trading Estate, Station Road  
 Pampisford, Cambridge, CB22 3HB